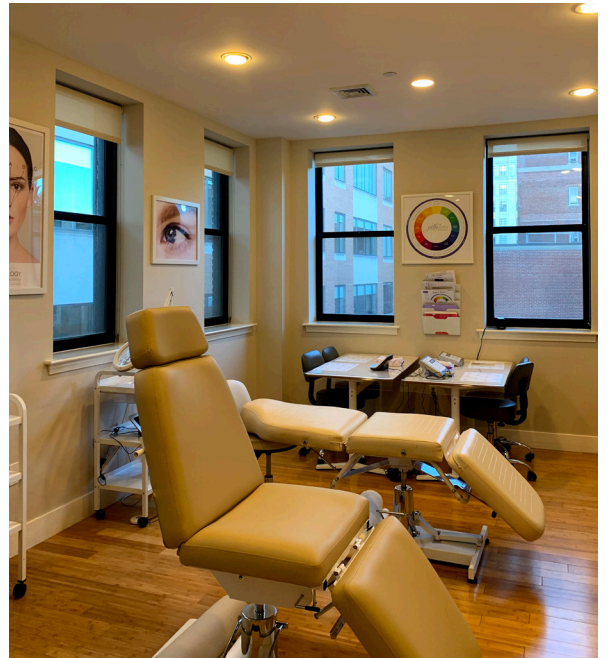


18
NEWBURY

BACK BAY • BOSTON, MA

5TH FLOOR: 2,056 SF | AVAILABLE 7/1/21 | RENT: NEGOTIABLE



— 18 NEWBURY STREET —

Boston Realty Advisors is pleased to present a new full floor office suite available in the prestigious first block of Newbury Street. This suite has wood floors and tons of natural light, a kitchen and shower as well as 4-5 offices and 1-2 conference rooms. 18 Newbury is conveniently located walking distance to MBTA Commuter Rail and Orange & Green T Lines and steps away from Hynes Convention Center, the Prudential Center and Copley Place.



FINANCIAL DISTRICT

LOGAN INTERNATIONAL AIRPORT

SEAPORT DISTRICT



BOSTON COMMON

- AMENITIES:
- Hardwood floors
 - Two private bathrooms- one with a shower.
 - Walking distance to MBTA Commuter Rail and Orange & Green T Lines.
 - Steps away from Hynes Convention Center, the Prudential Center and Copley Place.



ARLINGTON

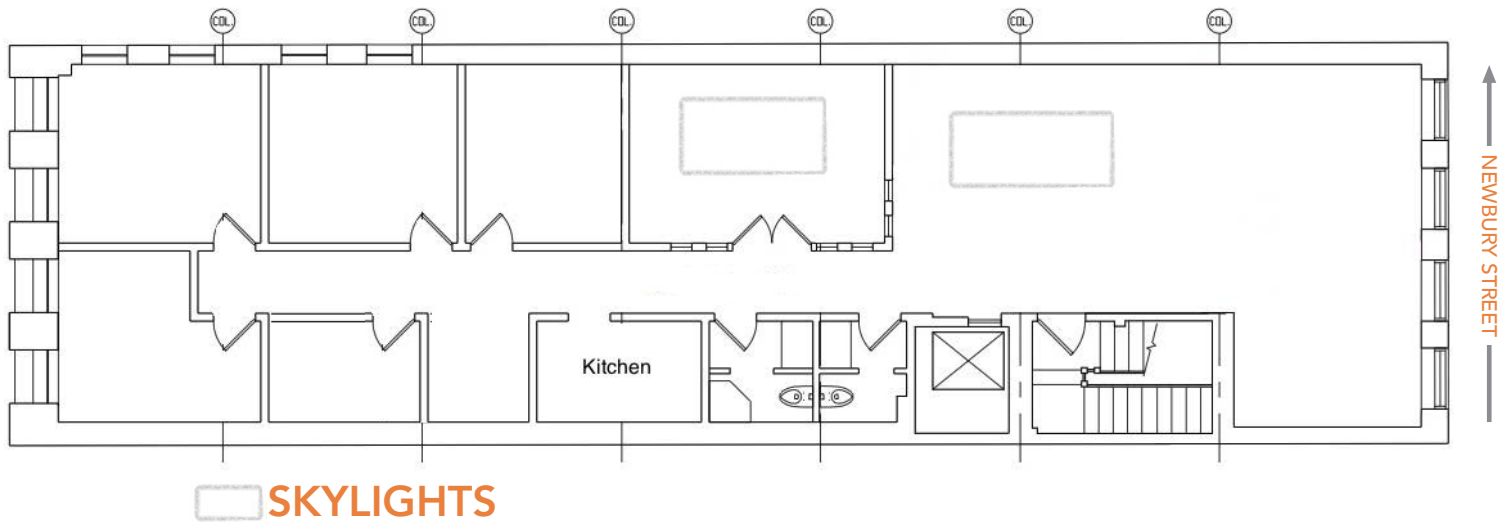
COPLEY

BACK BAY

HYNES CONVENTION CENTER



FLOOR PLAN: 5TH FLOOR - 2,056 SF



DOWNTOWN OFFICE

BONNY L. DOORAKIAN
Managing Director & Partner
617.850.9655
bdoorakian@bradvisors.com

WILLIAM H. CATLIN
Managing Director & Senior Partner
617.850.9606
wcatlin@bradvisors.com

ROBERT F. LECLAIR
Managing Director & Partner
617.850.9614
rleclair@bradvisors.com



Boston Realty Advisors
ENTREPRENEURIAL AGILITY. INSTITUTIONAL EXPERTISE.

745 Boylston Street | Boston, MA 02116 | (T) 617.375.7900 | (F) 617.536.9566 | BRAdvisors.com

© Copyright Boston Realty Advisors. All rights reserved. The information contained here has been obtained through sources deemed reliable but cannot be guaranteed as to its accuracy. Any information of special interest should be obtained through independent verification.