

35 NEWBURY STREET

RETAIL FOR LEASE
980-1,980 SF



The D.L. Saunders
Real Estate Corp.
Est. 1898



Boston Realty Advisors
ENTREPRENEURIAL AGILITY. INSTITUTIONAL EXPERTISE.

In Boston's Back Bay, a prime retail location in the center of it all.

SPACE AVAILABLE

980–1,980 SF Available
Ground Level



SPACE HIGHLIGHTS

Bathrooms, Storage Area and
HVAC included

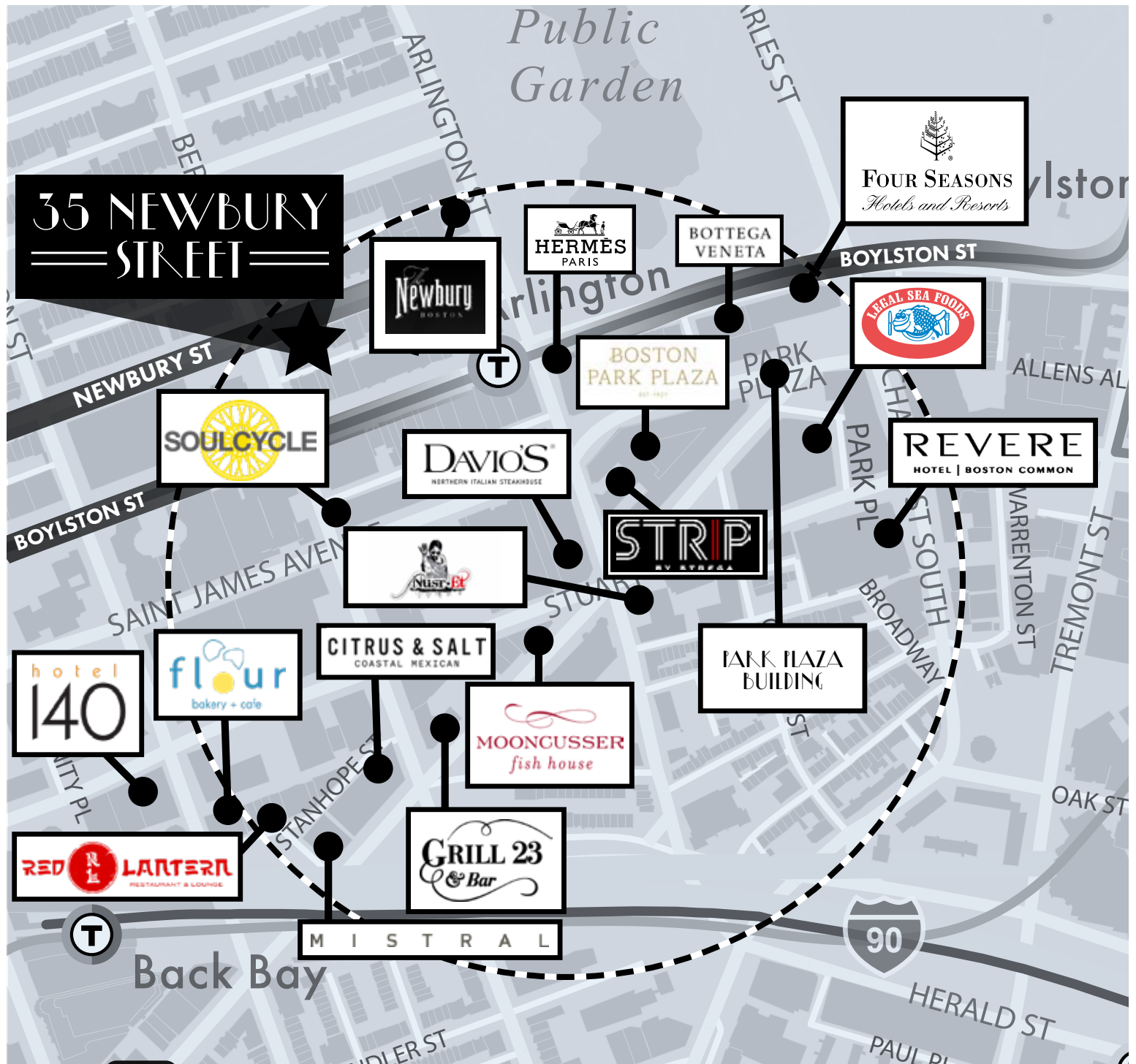


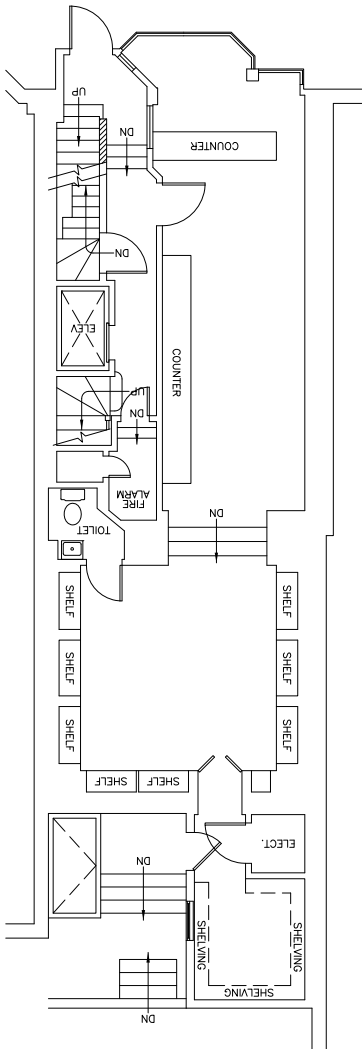
WINDOW GLASS AREA

Lots of Signage and
Display Area

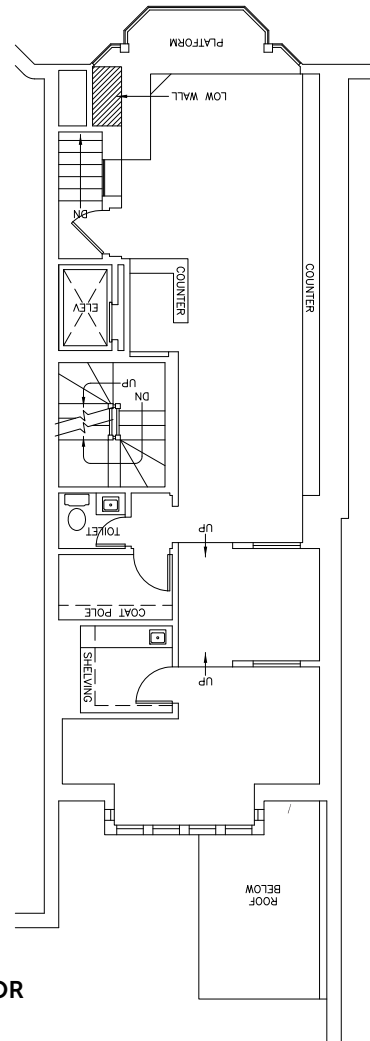


The Neighborhood





FIRST FLOOR



SECOND FLOOR

RETAIL TEAM | BOSTON REALTY ADVISORS

WHITNEY GALLIVAN
617.850.9612
wgallivan@bradvisors.com

JOE WAGNER
617.850.9675
jwagner@bradvisors.com



LISA SAUNDERS
The D.L. Saunders Real Estate Corp.



745 Boylston Street | Boston, MA 02116 (T) 617.375.7900 | (F) 617.536.9566 | BRAdvisors.com

© Copyright Boston Realty Advisors. All rights reserved. The information contained here has been obtained through sources deemed reliable but cannot be guaranteed as to its accuracy. Any information of special interest should be obtained through independent verification.