

# RESTAURANT FOR LEASE

– 3,500 SF –

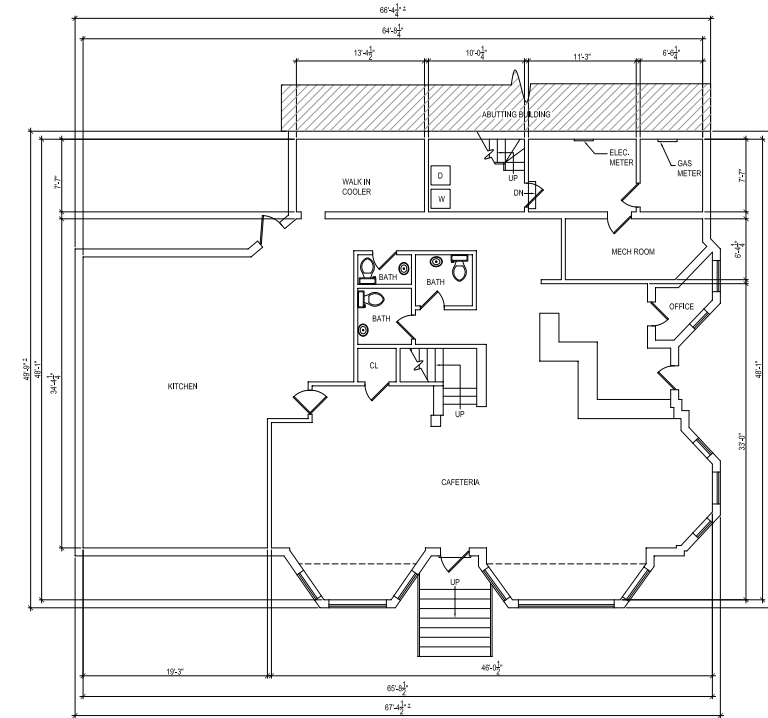


**Boston Realty Advisors**  
ENTREPRENEURIAL AGILITY. INSTITUTIONAL EXPERTISE.

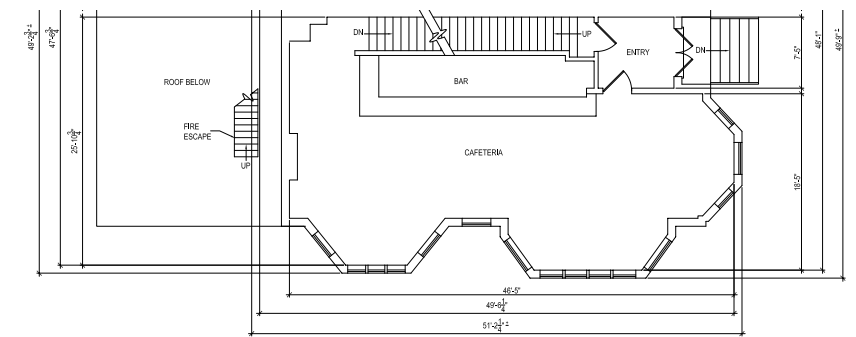
# NEWBURY STREET: THE BUSIEST BLOCK



# FLOOR PLAN



GARDEN LEVEL



PARLOR LEVEL

## NEW RETAIL

- 8 Newbury:** Rolex
- 88 Newbury:** Sephora Studio. Newbury chosen for 1st location in the world
- 91 Newbury:** Tea Forte
- 144 Newbury:** Lush
- 176 Newbury:** Brodney Antiques and Jewelry
- 177 Newbury:** Credo Beauty, the leading emerging natural cosmetics brand
- 240 Newbury:** Suit Supply 10k SF flagship

## NEW RESTAURANTS

- 103 Newbury:** Revival Café
- 125 Newbury:** Jonquils Café & Bakery
- 159 Newbury:** Capital Burger
- 163 Newbury:** Blue Bottle
- 205 Newbury:** Caffè Nero
- 235 Newbury:** Serafina
- 314 Newbury:** Grand Tour



# STREET GUIDE

NEWBURY STREET		NEWBURY STREET		NEWBURY STREET	
Deluca's Market	239	240A	Suitsupply (Coming Soon) (Up/Down)	Fidelity Investments	801
Maverick Suits (Up) / Barbershop Lounge (Down)	245	242	Retail	Matress Firm	811
Retail (Up) / Wan's Yunnan Noodle (Down)	247	244	Vapring (Up) / Wichit (Down)	Apple	815
Amorino Gelato (Up) / Lauren's Nails (Down)	249	246	Retail	Sir Speedy (Up)	827
Royce Chocolate (Up) / Mulberry Road (Down)	251	248	Beacon Realty (Up) / Regail Tea (Down)	Supercuts (Up)	829
The Loft Salon & Day Spa (Up) / Glow Tanning (Up) / Boston Olive Oil (Down)	253	250	Little Miss Cupcake/ deWoife	Walgreens	841
Bullfinch Realty (Up) / La Neta (Down)	255	252	Easy Fix / Vacant	Bank of America / Adidas	855
Charles Realty (Up) / Bittersweet (Down)	257	254	Vacant (Up) / Lobstah on a Roll (Down)	Back Bay Social Club	867
Roost Bistro (Up) / La Voile Brasserie (Down)	259	262	Revolve Consignment (Up/Down)		883
Newbury Guest House (Up)	261	264	Retail		
The Threading Place (Up) / Blue Moon Smoke Shop (Down)	263	266	Tapeo (Up/Down)		
Itadaki Japanese Restaurant (Up/Down) / A&S Realty (Up/Down)	267	268	Mr. Tea (Up) / Sneaker Junkies (Up)		
Jordan the Tailor (Up) / Rachel's Make-Up & Brow Studio / Newbury Electrology & Skin Care	271	270	Retail (Up) / Dunkin Donuts (Down)		
Top Drawer	273	272	The Fairy Shop (Up) / Beantown Pho & Grill (Down)		
BoConcept	275	274	Newbury Dental (Up) / Town's Skin & Nails Salon (Down)		
Johnny Cupcakes (Up)		276	Under Construction		
Lunark Fashions (Up)	279				
Available- 2,500 SF					
GLOUCESTER STREET		GLOUCESTER STREET		GLOUCESTER STREET	
Available- 3,500 SF	279A	284	The Frye Company (Up/Down)	Trader Joe's (Down) / Free People	899
The Track House	285	286	Retail / Pinberry / Pavement Coffeehouse	Lir	901
O Optical	287	290	Emack & Bolio's Ice Cream (Up)	The Pour House	907
Eyesarr (Up) / Mother Juice (Down)	291	292	Retail (Up) / The UPS Store (Down)	McGreevy's	911
Upstick (Up/Down)	293	296	MiniLuxe (Up) / Red White (Down)	Berklee College of Music	921
Viselli Santoro Salon (Down)	297	302	Boston Threading (Up) / Blackstone Williams Realty (Down)	Cafe 939 Retail	939
Woodrich (Up) / Retail (Down)	299	304	Fjällräven (Up) / Lady M (Down)		
Fred Perry (Up) / The Hempest	301	306	Lure (Up) / Rick Walkers (Down)		
Ministry of Supply (Up) / CoCo Leaf (Down)	303	314	Grand Tour		
	305	316	Retail / Dependable Cleaners (Down)		
HEREFORD STREET		HEREFORD STREET		HEREFORD STREET	
Sonia	327	320	Boston Architectural College	Dillon's Restaurant & Bar	955
Madowell	329	324	Which Which? (Up) / City Smoke (Down)		
Salon Persona (Up)	331	326	The North Face		
Champion	333	328	Vans		
Sunglass Hut	335	330	Reiwatakiya (Up) / Bauer Wines & Spirits (Down)		
Retail	337	332-334	Condom World / Boston Smoke Shop		
Diesel	339	336	Viyade (Up) / Town's Skin & Nails Salon (Down)		
Uniqlo	341	338	Trident Booksellers & Cafe / Title Boxing		
Retail	343	342	Retail		
		344	Retail		

## RETAIL

WHITNEY E. GALLIVAN  
617.850.9612  
wgallivan@bradvisors.com

JOE WAGNER  
617.850.9675  
jwagner@bradvisors.com



**Boston Realty Advisors**  
ENTREPRENEURIAL AGILITY. INSTITUTIONAL EXPERTISE.

745 Boylston Street | Boston, MA | (T) 617.375.7900 | (F) 617.536.9566 | BRAdvisors.com

© Copyright Boston Realty Advisors. All rights reserved. The information contained here has been obtained through sources deemed reliable but cannot be guaranteed as to its accuracy. Any information of special interest should be obtained through independent verification.