

SUBLEASE | FULL FLOOR OFFICE SPACE

# 52 CHURCH STREET

BAY VILLAGE | BOSTON, MA



## AVAILABLE SPACE

4,164 SF on 2nd Floor



## PRICE

Mid \$30's Per SF



## TERM

Through 3/31/23



**Boston Realty Advisors**

ENTREPRENEURIAL AGILITY. INSTITUTIONAL EXPERTISE.





Located in Boston's Historic Bay Village, bordering Boston's Back Bay, Theater District and South End, 52 Church is a fantastic location to locate a small to mid-size business at cost-effective rates.

- Entire 2<sup>nd</sup> Floor
- Dedicated Entrance
- Exterior Signage

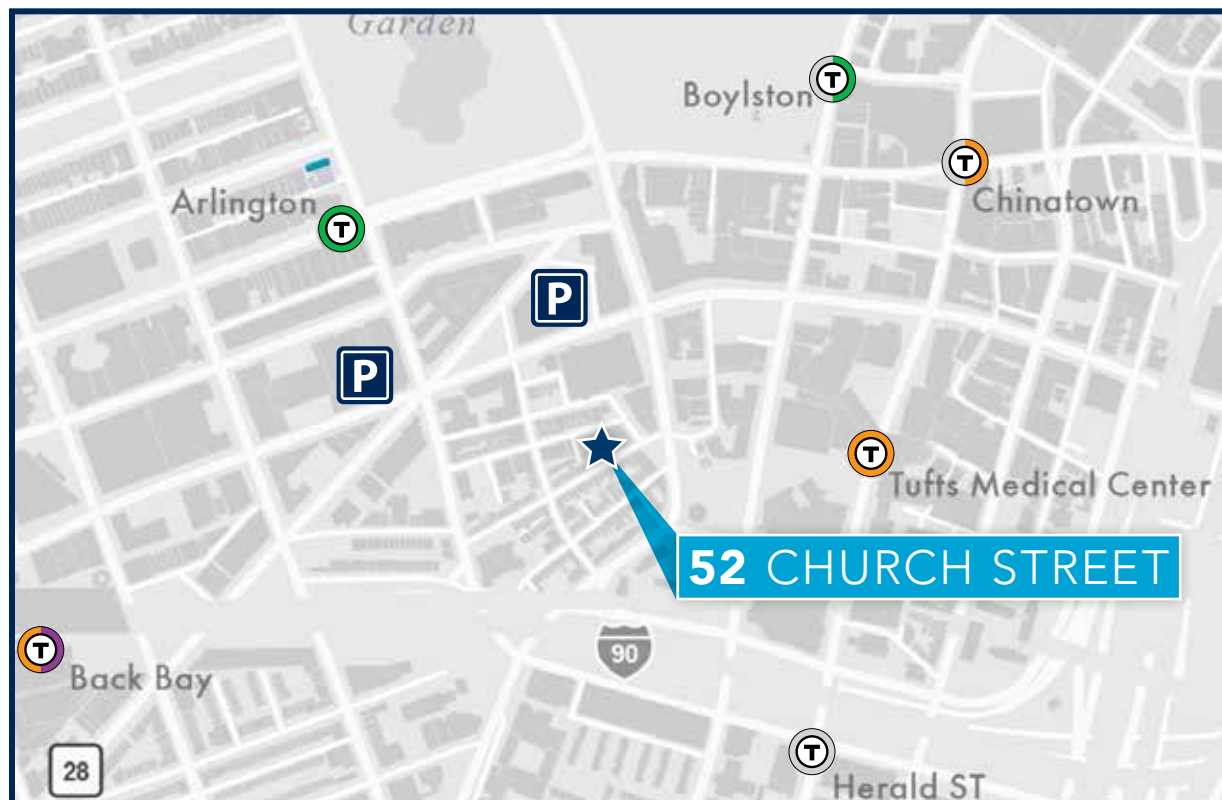
Bay Village is a quaint neighborhood that still gives its tenants easy access to the Mass Pike, Routes 93 N & S, and all that the Back Bay and South End have to offer.





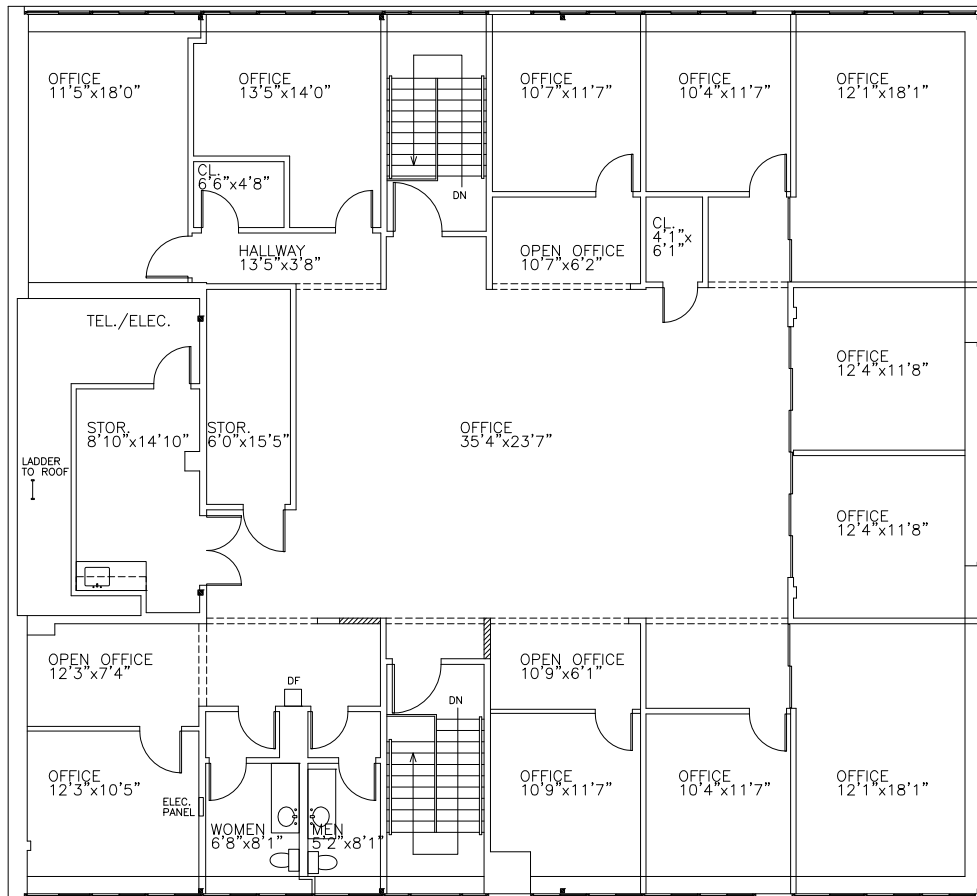


## LOCAL AMENITIES



# FLOOR PLAN | 4,164 SF

## PIEDMONT STREET



CHURCH STREET

## WINCHESTER STREET



**BONNY L. DOORAKIAN**  
Managing Director & Partner  
617.850.9655  
bdoorakian@bradvisors.com

**WILLIAM H. CATLIN, JR.**  
Managing Director & Sr Partner  
617.850.9606  
wcatlin@bradvisors.com

745 Boylston Street | Boston, MA 02116 | (T) 617.375.7900 | (F) 617.536.9566 | BRAdvisors.com

© Copyright Boston Realty Advisors. All rights reserved. The information contained here has been obtained through sources deemed reliable but cannot be guaranteed as to its accuracy. Any information of special interest should be obtained through independent verification.

June 8, 2020 9:57 AM