

THE
535
SOUTH BOSTON

FOR SALE

535 E. 4TH STREET

3 RENOVATED
LUXURY CONDOS



UNIT #1

Completely renovated in 2020, Unit #1 features an open floorplan with contemporary finishes, White Oak plank flooring & 10' ceilings. The kitchen has white Cityline cabinets, quartz counters, gas cooking & chef's appliances. Large adjacent dining area. Large living room with southern exposure & great natural light. Bedrooms each with own full bathroom featuring marble/porcelain tile, glass showers and heated floors. In-unit laundry, central air, additional storage, Ring doorbells & Nest Thermostat.



UNIT #2

Completely renovated in 2020, Unit #2 features an open floorplan with contemporary finishes, White Oak plank flooring & 10' ceilings. The kitchen has white Cityline cabinets, quartz counters, gas cooking & chef's appliances. Large adjacent dining area is perfect for entertaining. Large living room with southern exposure & great natural light. Bedrooms each with own full bathroom featuring marble/porcelain tile, glass showers and heated floors. In-unit laundry, central air, additional storage, Ring doorbells & Nest Thermostat.

UNIT #3

Completely renovated in 2020, Unit #3 is a penthouse with open floorplan, contemporary finishes and private rooftop with stunning City views. The condo features White Oak plank flooring, 10' ceilings & incredible natural light. The kitchen has white Cityline cabinets, quartz counters, gas cooking & chef's appliances. Large adjacent dining is perfect for entertaining. Living room with southern exposure and views over South Boston. Bedrooms each with own full bathroom featuring marble/porcelain tile, glass showers and heated floors. In-unit laundry, central air, additional storage, Ring doorbells & Nest Thermostat.





FINISHES

Kitchen

- Metropolitan CityLine cabinets
- Polished chrome pulls
- Cashmere Carrera Quartz counters
- Kohler Artifacts faucet (polished chrome)
- Undermount stainless steel sink
- Frigidaire/Whirlpool/GE/Samsung appliances (gas range, refrigerator, dishwasher, hood, built-in microwave & garbage disposal).

Bathrooms

- 24-36" bathroom vanities in Carrera Marble & Acrylic by Knorr & Senza Tuscany
- Kohler Artifacts polished chrome faucet
- Flooring: Grecian White Marble
- Shower wall tile: Porcelain
- Shower floors: Grecian White Hexagon
- White marble window sills in showers
- Kohler Artifacts shower faucet set (polished chrome) with handheld
- Vigo glass sliding & frameless shower doors
- Kohler polished chrome hardware
- Radiant heating all bathrooms.

Misc:

- LG stackable washer & dryer (venting)
- Recessed LED lighting
- Nest locks on building doors
- Ring doorbells
- Nest Thermostats
- Motion sensor closet lights
- BATU deck flooring
- Mist Outdoor Sconces (titanium) on rear decks
- Additional LED deck lighting

Windows Anderson 100 series (double hung)

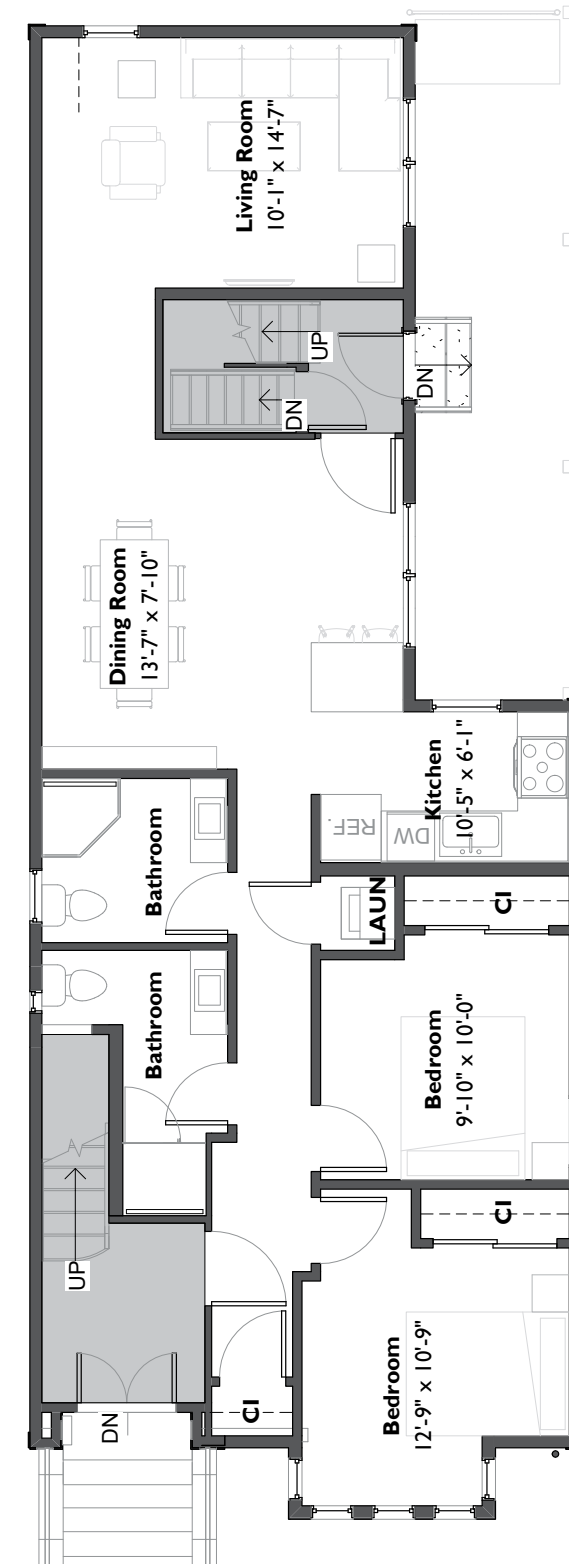
Flooring Wide Plank White Oak (8")
Base & crown moldings (4.5")

Plans, dimensions and features shown are approximate and are subject to change without notice or obligation. Variations may occur depending, for example, on construction variances, location of unit and/or mechanical or structural requirements.

FLOOR PLANS

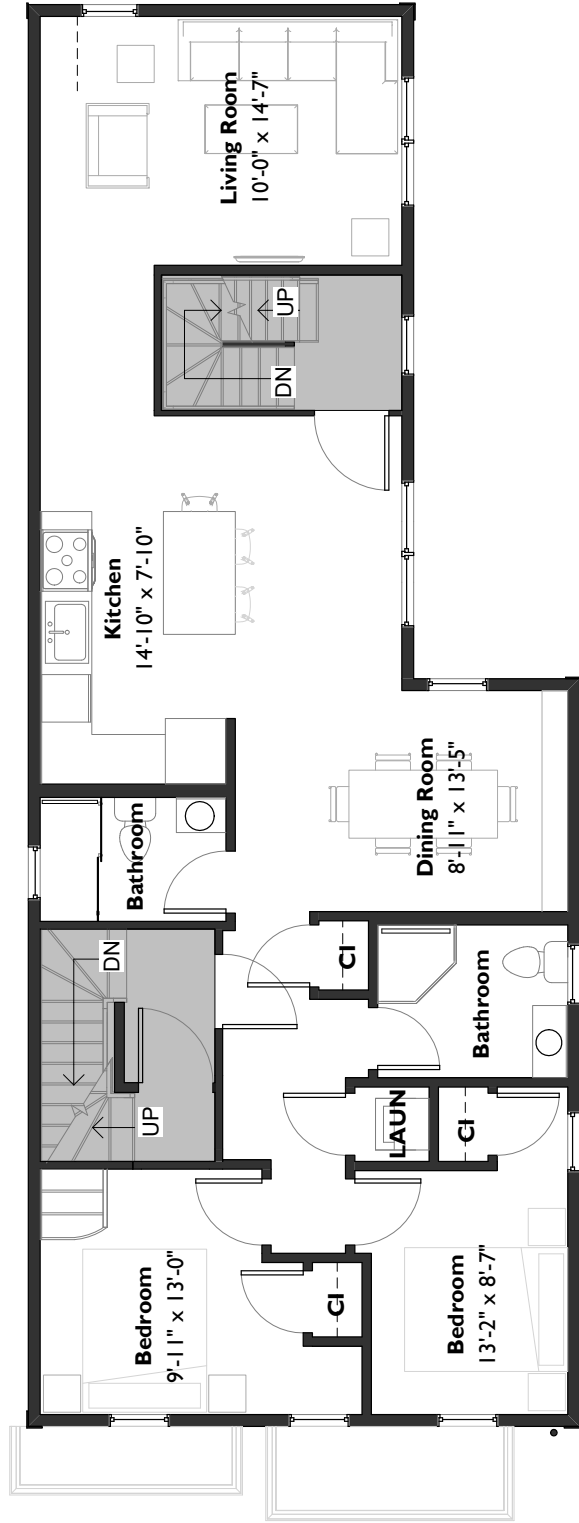
UNIT #1

975 SF



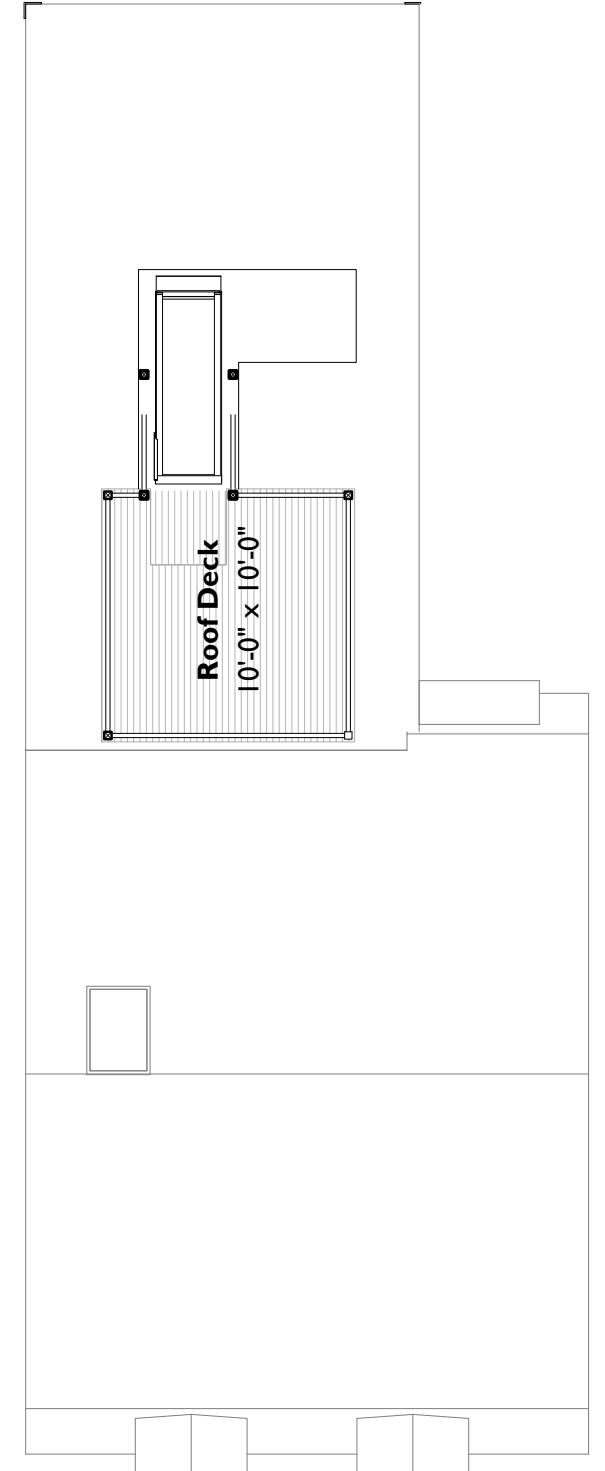
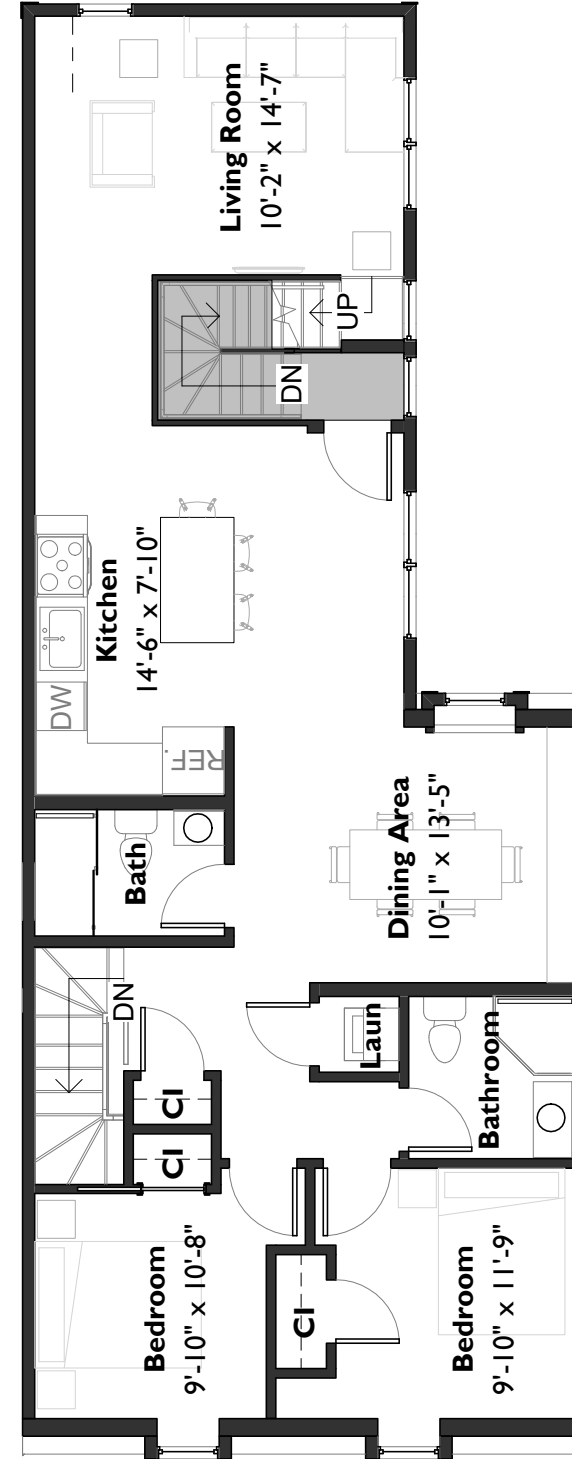
UNIT #2

967 SF



UNIT #3

1,081 SF



THE 535

SOUTH BOSTON

THE 535 is a completely renovated building with luxury 3 condos in the heart of South Boston. THE 535 features clean, contemporary finishes, open floorplans and soaring ceilings. Each 2 bedroom / 2 bathroom condo features modern conveniences such as Nest Locks & Thermostats, radiant heating in all bathrooms, laundry and central air. Located at 535 E. 4th Street, THE 535 is an easy walk to some of South Boston's best restaurants & bars, coffee shops, yoga studios & gyms.

THE535-SOUTHIE.COM



SOUTH BOSTON is experiencing significant growth in local and national retailers due to the revitalization of West Broadway, high amenity demand of a densely populated neighborhood, and proximity to the booming Seaport. Retail expansion along South Boston's main corridor of West Broadway is continuing to increase as major developments progress and upgraded retail spaces are delivered.

BROADWAY

5 min drive | 9 min bus
17 min walk
(0.9 mi)



BEACH/HARBORWALK

10 min walk (0.5 mi)



THOMAS PARK

3 min walk (0.2 mi)





THE
535

SOUTH BOSTON

THE535-SOUTHIE.COM

DAVE COSTELLO
Senior Vice President
617.642.9700
dcostello@bradvisors.com

SCOTT ACCORSINI
Vice President
508.259.1442
saccorsini@bradvisors.com



745 Boylston Street | Boston, MA | 617.375.7900 | BRAdvisors.com

© Copyright Boston Realty Advisors. All rights reserved. The information contained here has been obtained through sources deemed reliable but cannot be guaranteed as to its accuracy. Any information of special interest should be obtained through independent verification.