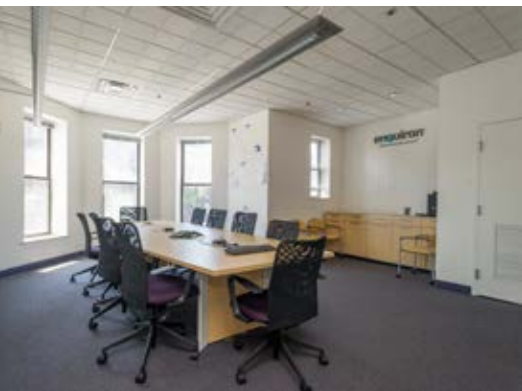


OFFICE SPACE
FOR LEASE

434

3,004 RSF
AVAILABLE

MASSACHUSETTS AVENUE | BOSTON, MA



Boston Realty Advisors has been retained as the Exclusive Agent for the lease of 3,004 RSF of office space at **434 Massachusetts Avenue**, ideally situated at the confluence of Massachusetts Avenue and Columbus Avenue, just blocks from the Symphony stop on the Green Line.



 **Boston Realty Advisors**
ENTREPRENEURIAL AGILITY. INSTITUTIONAL EXPERTISE.

BUILDING DETAILS

- Elegant six-story 38,000 SF building
- Situated on the corner of Massachusetts Avenue and Columbus Avenue
- Retail space occupied by Dunkin Donuts and one of South End's hottest new restaurants, SRV
- Recent common area capital improvements
- Abundant local amenities
- Steps from MBTA Orange and Green Lines
- Strong local ownership

SPECIFICATIONS

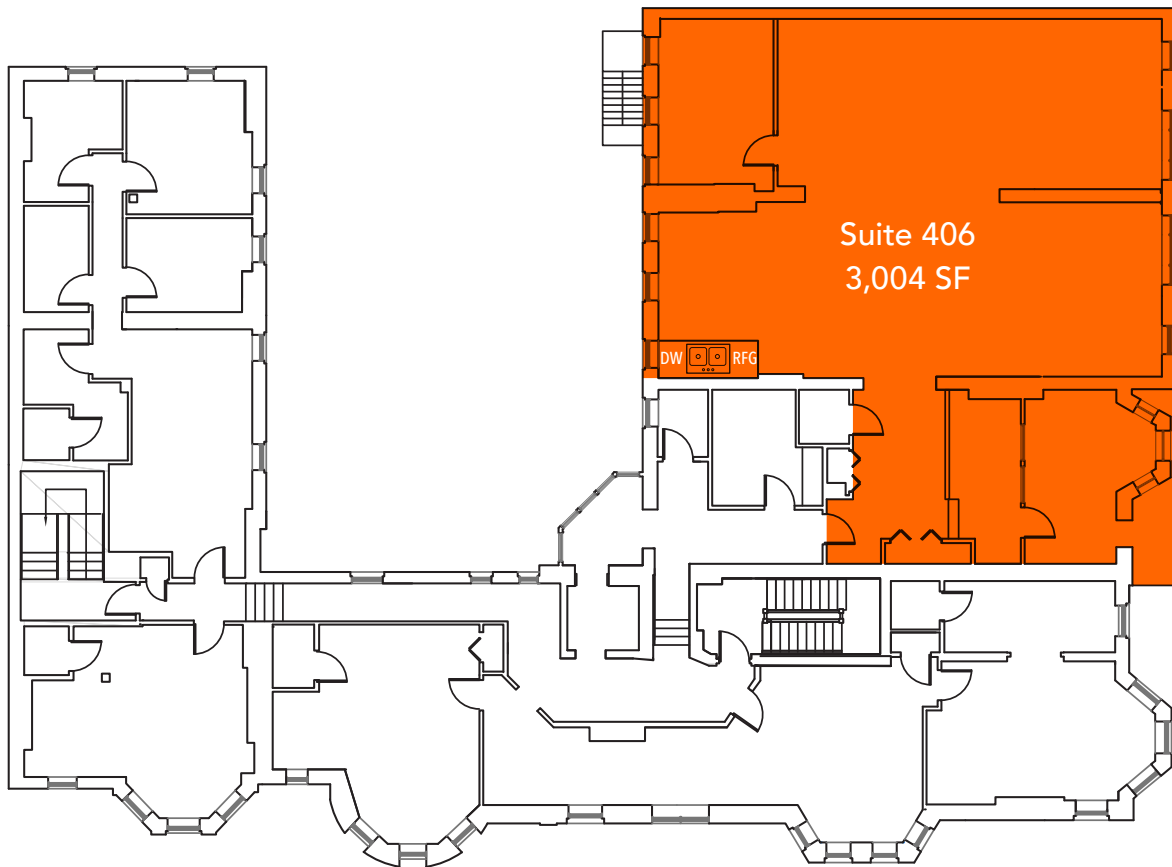
TOTAL SIZE:
38,000 SF

FLOORS:
Six (6) Floors

AVAILABLE SUITES:
4th Floor
3,004 RSF

TERM:
3-5 years





WILLIAM H. CATLIN, JR.
617.850.9606
wcatlin@bradvisors.com

ROBERT F. LECLAIR
617.850.9614
rleclair@bradvisors.com

BONNY L. DOORAKIAN
617.850.9655
bdoorakian@bradvisors.com



745 Boylston Street | Boston, MA 02116 | (T) 617.375.7900 | (F) 617.536.9566 | BRAdvisors.com

© Copyright Boston Realty Advisors. All rights reserved. The information contained here has been obtained through sources deemed reliable but cannot be guaranteed as to its accuracy. Any information of special interest should be obtained through independent verification.