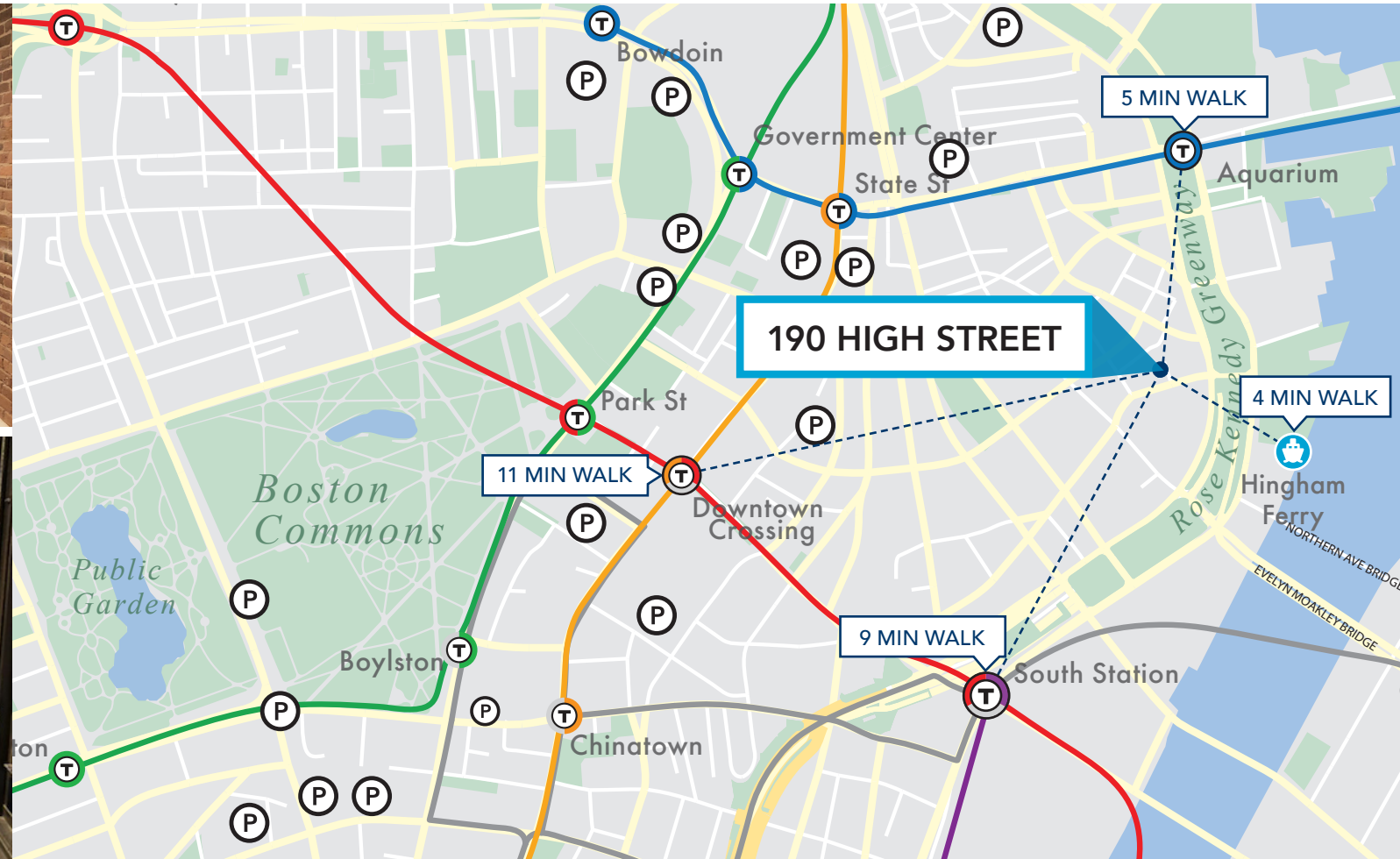
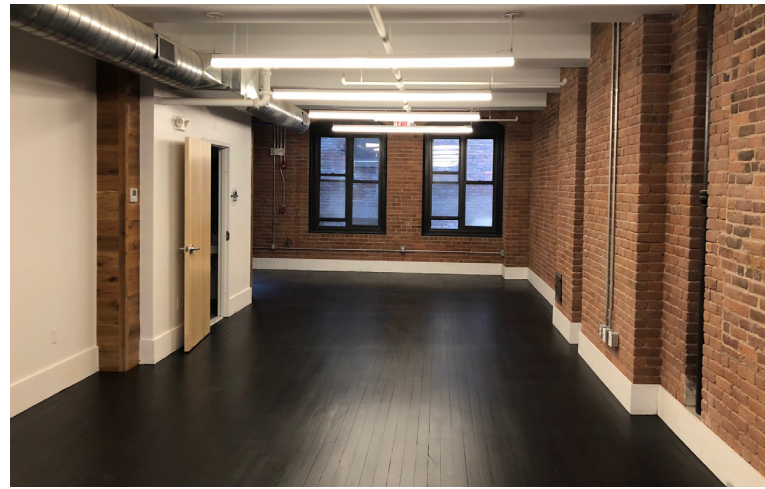


190 HIGH STREET

COOL CREATIVE SPACE



Boston Realty Advisors is pleased to present one floor at 2,241 SF for lease at 190 High Street. Located near Boston's historic harbor and greenway, this 13,152 square foot, 6-story office building is only steps away from countless amenities such as retail, dining, public transportation and parking. The ownership is completing a street to the suite renovation.



SPECIFICATIONS

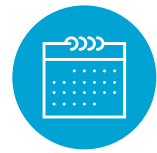
- Under new ownership
- Showers and full kitchen per floor in suites
- Undergoing major renovations with all new spec suites, lobby + elevators.
- Convenient to public transportation, including commuter rail and red line at South Station and South Shore Commuter boat.
- Steps to several parking garages and area amenities including the Palm Restaurant and Boston Harbor and Intercontinental Hotels, Equinox Fitness Center, Boston Greenway Park, Starbucks, Dunkin Donuts, Panera and food court at International Place and a wide variety of other eateries.

AMENITIES



AVAILABLE SPACE

2nd: 2,241 SF



LEASE TERM

2-5 Years

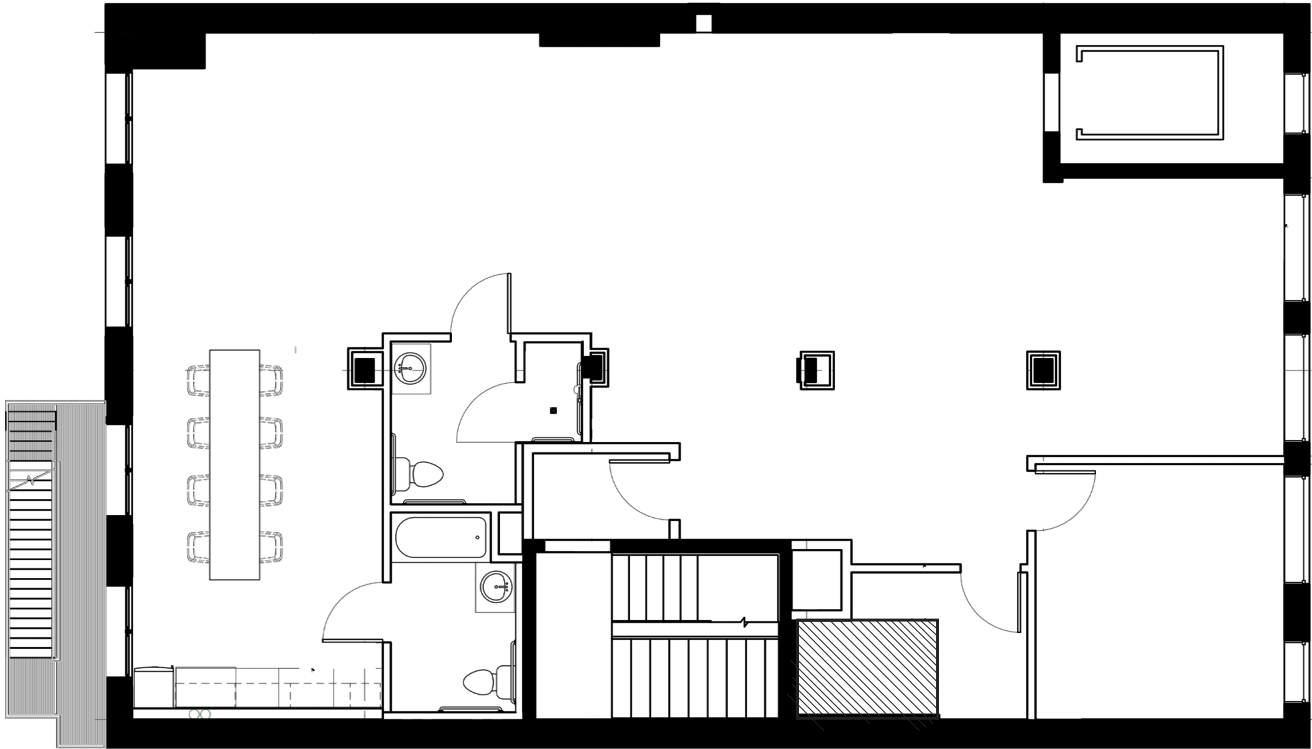


LEASE RATE

Floor 2: \$46/SF



FLOOR PLAN | 2ND FLOOR



HIGH STREET

BONNY L. DOORAKIAN
Managing Director & Partner
617.850.9655
bdoorakian@bradvisors.com

WILLIAM H. CATLIN, JR.
Managing Director & Senior Partner
617.850.9606
wcatlin@bradvisors.com

ROBERT F. LECLAIR
Managing Director & Partner
617.850.9614
rleclair@bradvisors.com



745 Boylston Street | Boston, MA | (T) 617.375.7900 | (F) 617.536.9566 | BRAdvisors.com

© Copyright Boston Realty Advisors. All rights reserved. The information contained here has been obtained through sources deemed reliable but cannot be guaranteed as to its accuracy. Any information of special interest should be obtained through independent verification.