



RETAIL SPACE FOR LEASE

1,011 SF – 2,086 SF



Boston Realty Advisors

ENTREPRENEURIAL AGILITY. INSTITUTIONAL EXPERTISE.

NEWBURY STREET: THE BUSIEST BLOCK



NEW RETAIL

8 Newbury: Rolex

88 Newbury: Sephora Studio. Newbury chosen for 1st location in the world

144 Newbury: Lush

174 Newbury: Charleston Shoe Co.

177 Newbury: Tea Forte

177 Newbury: Credo Beauty, the leading emerging natural cosmetics brand

240 Newbury: Suit Supply 10k SF flagship

NEW RESTAURANTS

103 Newbury: Revival Café

125 Newbury: Jonquils Café & Bakery

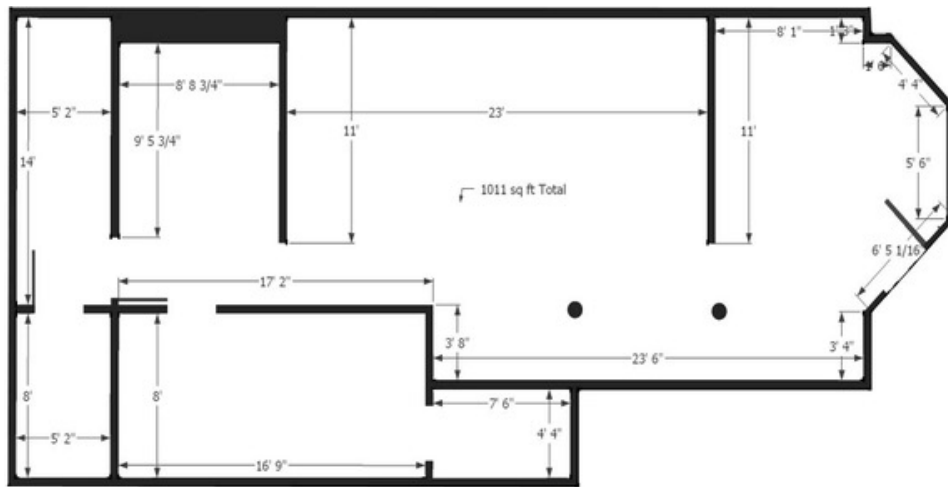
163 Newbury: Blue Bottle

173 Newbury: JP Licks

205 Newbury: Caffè Nero

235 Newbury: Serafina

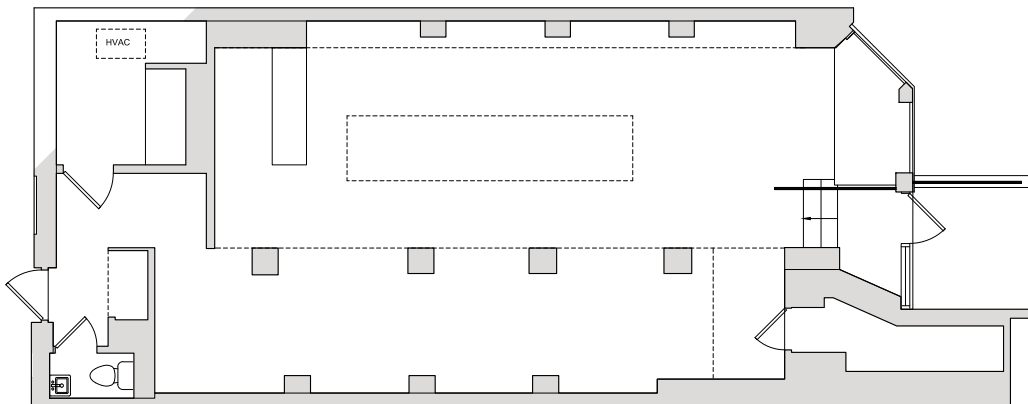
ABOUT THE SPACE



WALK-UP
±1,011 SF

NEWBURY STREET

±1,075 SF



APPROXIMATE SIZE

- › 1,011 SF – 2,086 SF

LOCATION

- › Located on the third block of Newbury between Clarendon and Dartmouth Streets

SITE STATUS

- › Available

AVAILABILITY

- › Q1 2020

COMMENTS

- › Beautiful boutique on one of Newbury Street's best blocks
- › Highly visible location
- › Move in condition

STREET GUIDE

Map of Copley Square area showing streets: BERKELEY STREET, CLARENDON STREET, DARTMOUTH STREET, COMMONWEALTH AVENUE, NEWBURY STREET, and BOYLSTON STREET.

BLOCK 1 (67-105): MaxMara (67, 69), VINCE. (71), VERAWANG (73), UGG (75), MARC JACOBS (77, 79), WARBY PARKER (81, 83, 85), INDOCHINO (91), ThinkingCap (91), 93-95, 97, 99, SIMON PEARCE (103), 105.

BLOCK 2 (234-88): 234, RH, 82, VICTORIA'S SECRET (82), NORDSTROM (84, 86), 88, ATHLETA (88), H&M (88).

BLOCK 3 (82-88): 491, 497, BSC (505), boston sports clubs (505).

BLOCK 4 (109-147): COLE HAAN (109), rag & bone (111-115), FATFACE (117, 119), Agent Provocateur (121, 123), JONATHAN ADLER (127-129), LEVI'S (131), in the pink (133), BONOBOS (135), LONGCHAMP (139), ART SHAVING (139), JOIE (141), BANG & OLUFSEN (141), 143, 147.

BLOCK 5 (108-144): 108, 110, Kiehl's (110), 112, Betsy Jenney (114), RIGGARDI (116), T-Mobile (118), ALL SAINTS (126), SEA BAGS (128), REISS (132), 134, 136, 138, 140, LUSH (142), 144, 144B, COS (144).

BLOCK 6 (530-607): 530, 535, 545, CROCKETT (551), 553, DIG INN (557), elovar (563), boLoco (565, 569), new balance (575, 579), 581, CVS pharmacy (587), 601, 607.

Copley Square

(T) Transit Station

WHITNEY E. GALLIVAN
617.850.9612
wgallivan@bradvisors.com

JOE WAGNER
617.850.9675
jwagner@bradvisors.com



745 Boylston Street | Boston, MA | (T) 617.375.7900 | (F) 617.536.9566 | BRAdvisors.com

© Copyright Boston Realty Advisors. All rights reserved. The information contained here has been obtained through sources deemed reliable but cannot be guaranteed as to its accuracy. Any information of special interest should be obtained through independent verification.