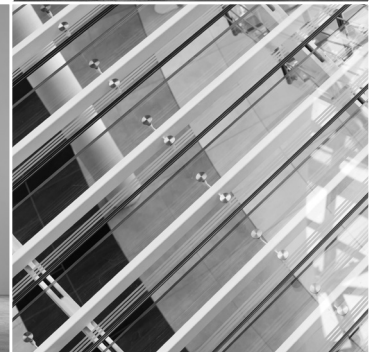
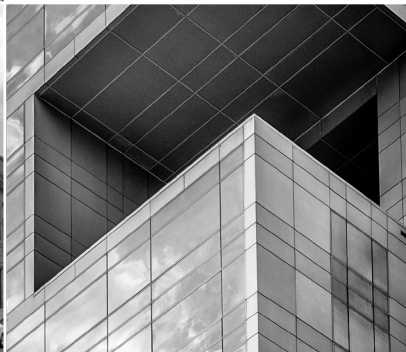




**HUMAN SERVICES
PRACTICE GROUP**

EDUCATION | MEDICAL
ASSOCIATIONS | INSTITUTIONAL



BOSTON REALTY ADVISORS is a full-service commercial real estate brokerage and consulting firm with an integrated team of highly experienced and entrepreneurial professionals.

Founded in 2001 on the principles of collaboration and thought leadership, we approach commercial real estate from a different perspective. Our integrated platform encourages and facilitates the exchange of knowledge, market insights and industry relationships to provide superior results. As a privately held firm, we are uniquely positioned to guarantee the personal involvement of senior partners across all our specialized service lines.

Core capabilities include tenant and landlord representation, property consulting, investment sales and financing solutions.

SERVICES

A black and white photograph of a multi-story brick building with many windows, viewed from a low angle looking up.

LANDLORD
REPRESENTATION

A black and white photograph of a modern office interior with a large glass window, several office chairs, and a conference table.

TENANT
REPRESENTATION

A black and white photograph of a large, circular glass dome structure, possibly a conservatory or a modern architectural feature, with trees visible through the glass.

CAPITAL
MARKETS

A black and white photograph of a modern multi-story building with a glass facade and balconies, viewed from a low angle looking up.

NEW DEVELOPMENT
MARKETING

HUMAN SERVICES PRACTICE

Boston Realty Advisors brings decades of experience advising non-profit clients and evaluating their real estate interests to plan for sustainability and growth. Our team understands the unique real estate considerations of the non-profit sector and are passionate about serving the New England non-profit community.

SERVICES

- Site Selection
- Acquisition Management
- Asset Disposition
- Capital Structuring
- Real Estate Needs Analysis/Valuation
- Lease Negotiations

COMMUNITY EXPERIENCE

MEDICAL

PRIMER
PUBLIC RESPONSIBILITY IN
MEDICINE AND RESEARCH



EDUCATION



HUMAN SERVICES



RELIGIOUS





HUMAN SERVICES GROUP TEAM

JASON S. WEISSMAN

Founder & Senior Partner
617.850.9608

jweissman@bradvisors.com

NICHOLAS M. HERZ

Managing Director & Partner
617.850.9624

nherz@bradvisors.com

CHRIS MCMAHON

Managing Director
617.721.6437

cmcmahon@bradvisors.com

ANDREW NEAL

Associate
617.850.9620

aneal@bradvisors.com



Boston Realty Advisors

ENTREPRENEURIAL AGILITY. INSTITUTIONAL EXPERTISE.