

FOR LEASE

85 MAIN STREET, WATERTOWN, MA

OFFICE/RETAIL



AVAILABLE SPACE

1st Floor: 2,672 SF

SPECIFICATIONS

Term: Flexible

Rent: Low to Mid \$20s

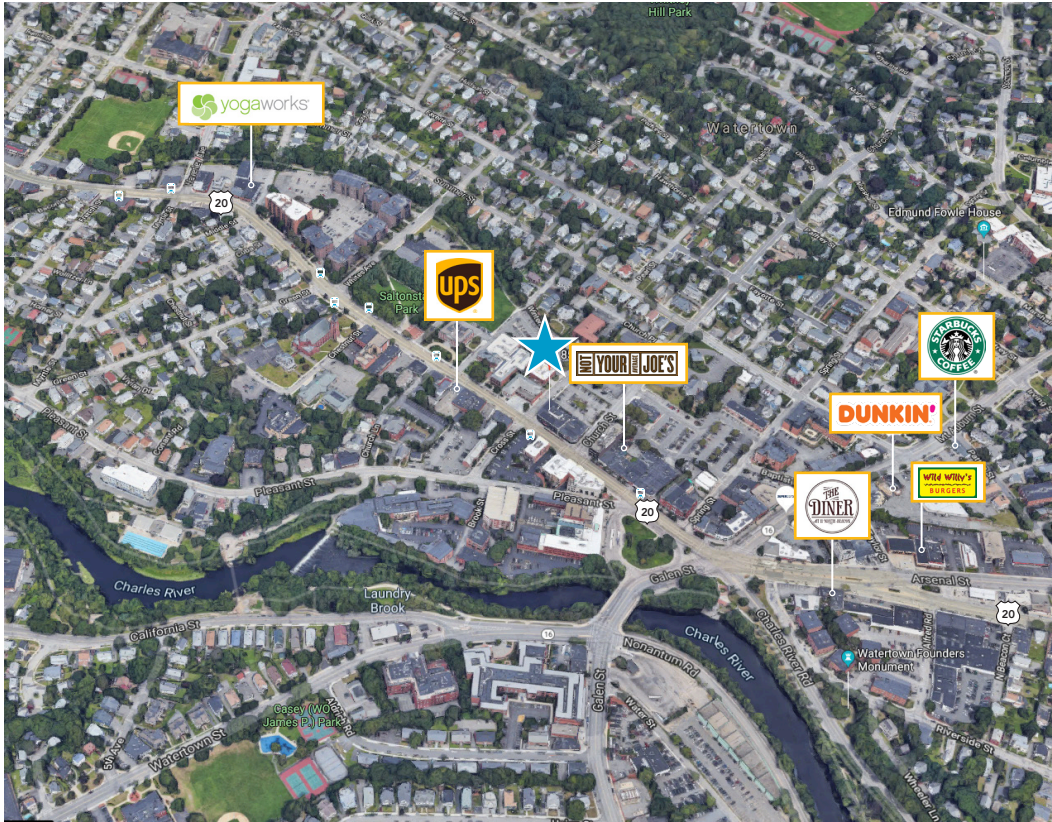
BUILD-OUT

Open Office Space with 2 Offices & Kitchen

FOR LEASE

85 MAIN STREET, WATERTOWN, MA

OFFICE/RETAIL



ACCESS

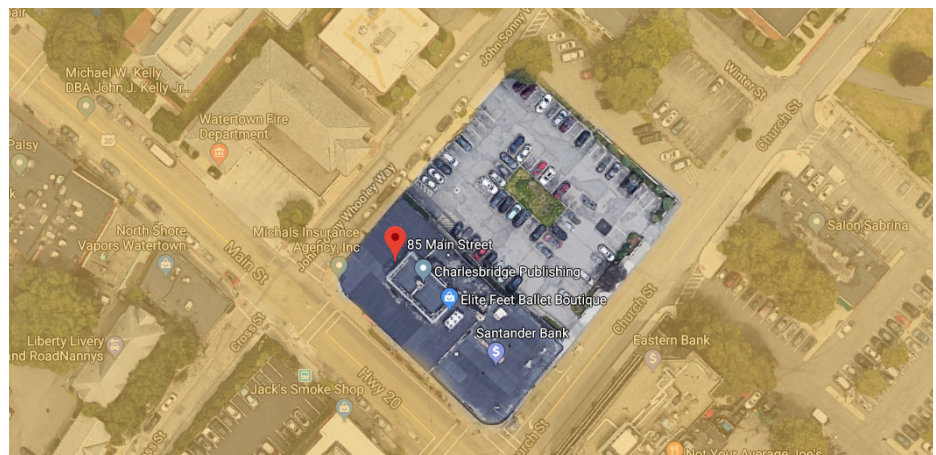
- Steps to **Watertown Yards** bus depot, offering bus service to Downtown Boston/Back Bay as well as connections to Harvard Sq, Kenmore Sq and Waltham/Moody Street.

- Located on Route 20, minutes from the Mass Pike/I-90 (Exit 17).

SIGNAGE OPPORTUNITY

Prominent Route 20 signage opportunity in bustling Watertown Square.

FREE PARKING INCLUDED



BONNY L. DOORAKIAN
617.850.9655
bdoorakian@bradvisors.com

MALCOLM NACHMANOFF
617.850.9635
mnachmanoff@bradvisors.com



745 Boylston Street, Boston, Massachusetts 02116 • (T) 617.375.7900 • (F) 617.536.9566 BRAdvisors.com

© Copyright Boston Realty Advisors. All rights reserved. The information contained here has been obtained through sources deemed reliable but cannot be guaranteed as to its accuracy. Any information of special interest should be obtained through independent verification.