

# 400 COMMONWEALTH

## OFFICE SPACE FOR LEASE



400 COMMONWEALTH AVE  
BOSTON, MA

3,000 RSF IN CLASS B OFFICE BUILDING

*Boston Realty Advisors has been exclusively retained to lease 400 Commonwealth Avenue, in Boston's Back Bay.*

## DESCRIPTION OF SPACE

- Floor 2, Suite B: 3,000 RSF
- Suites available immediately
- Beautiful glass shared conference room
- Open interior with workstations
- Large shared kitchenette
- Up to 4 garage parking spaces
- Abundance of metered parking for visitors on the Newbury Street Annex
- Steps from the MBTA's Hynes Station and Newbury Street





EAST BOSTON

NORTH END

BEACON HILL

BACK BAY

DOWNTOWN BOSTON

LOGAN AIRPORT

JOHN HANCOCK TOWER

SEAPORT

BOSTON CONVENTION & EXHIBITION CENTER

SOUTH BOSTON

SOUTH END

CHRISTIAN SCIENCE BUILDING

BOSTON SYMPHONY HALL

THE FENS

CHARLES RIVER BASIN

Massachusetts Avenue

Arlington Street

Storrow Drive

Beacon Street

Marlborough Street

Commonwealth Avenue

Newbury Street

Boylston Street

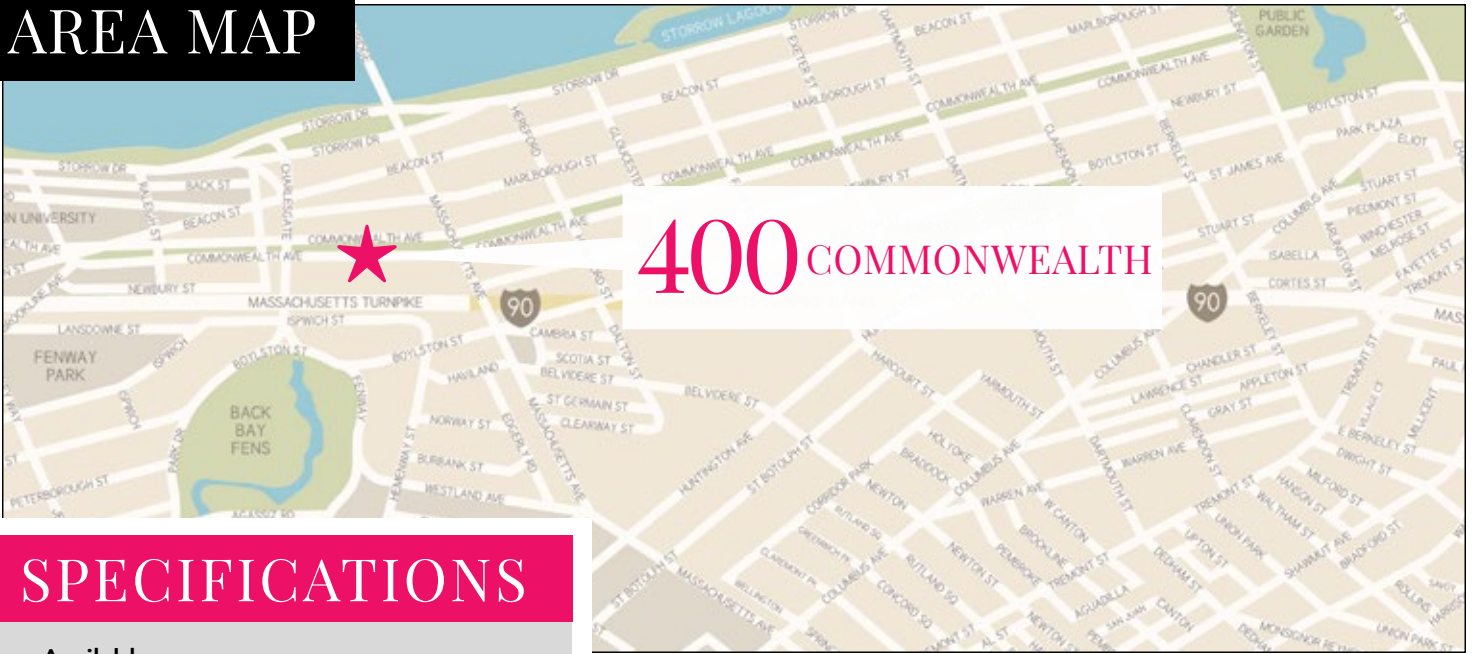
PRUDENTIAL BUILDING

SHOPS AT THE PRUDENTIAL CENTER

400  
COMM



# AREA MAP

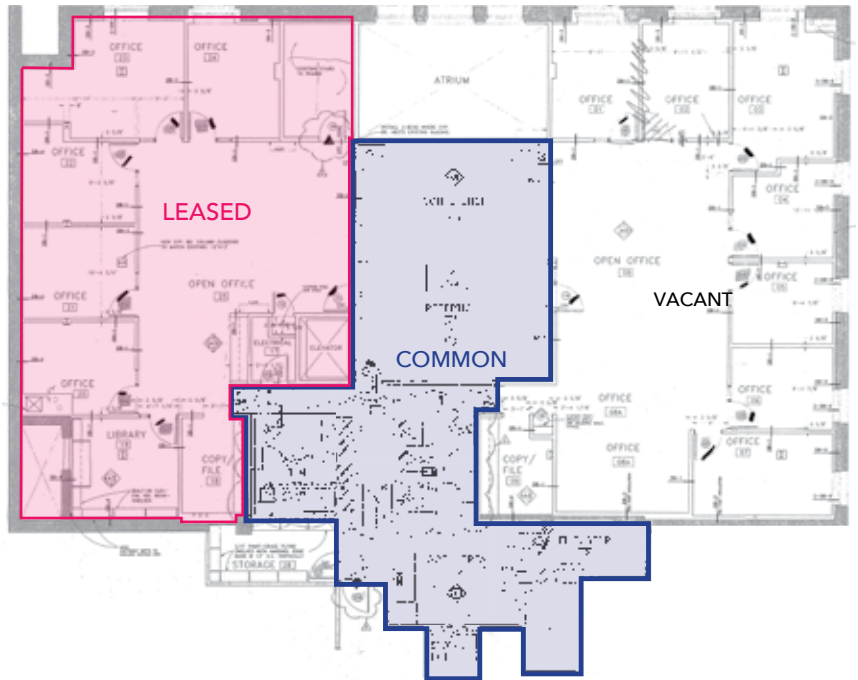


## 400 COMMONWEALTH

# SPECIFICATIONS

- Available Space** 3,000 RSF on the 2nd Floor
- Timing** Available Immediately
- Floors** Six (6)
- Parking** Up to four (4) garage parking spaces available  
\$350-\$400/month/space

# FLOOR PLANS



**WILLIAM H. CATLIN, JR.**  
Managing Director & Sr Partner  
617.850.9606  
wcatlin@bradvisors.com

**BONNY L. DOORAKIAN**  
Managing Director & Partner  
617.850.9655  
bdoorakian@bradvisors.com

**JUSTIN D. HARLOW**  
Senior Associate  
617.850.9613  
jharlow@bradvisors.com



745 Boylston Street | Boston, MA 02116 | (T) 617.375.7900 | (F) 617.536.9566 | BRAdvisors.com

© Copyright Boston Realty Advisors. All rights reserved. The information contained here has been obtained through sources deemed reliable but cannot be guaranteed as to its accuracy. Any information of special interest should be obtained through independent verification.