

CREATIVE LOFT OFFICE SPACE FOR LEASE

36 Bromfield St, Boston
250-3,138 SF AVAILABLE
SMALL SUITES AVAILABLE

Boston Realty Advisors is pleased to present space for lease at 36 Bromfield Street. This stately five-story office building is strategically located in the heart of Boston's Downtown Crossing neighborhood. The building's location boasts immediate proximity to all major public transportation channels and public parking. It offers several creative spaces for different types of users.

The property is owned and managed by
The Druker Company, Ltd.



AVAILABLE SPACE

4th Floor	3,138 RSF
5th Floor	250 - 1,278 RSF



BUILDING SIZE

34,932 SF
on 5 floors



LEASE TERM

2 Years +

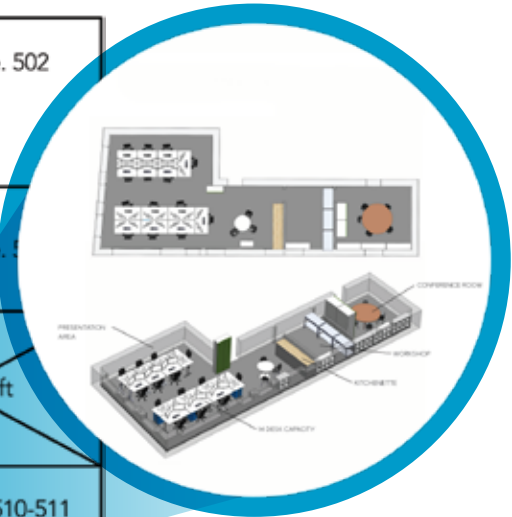
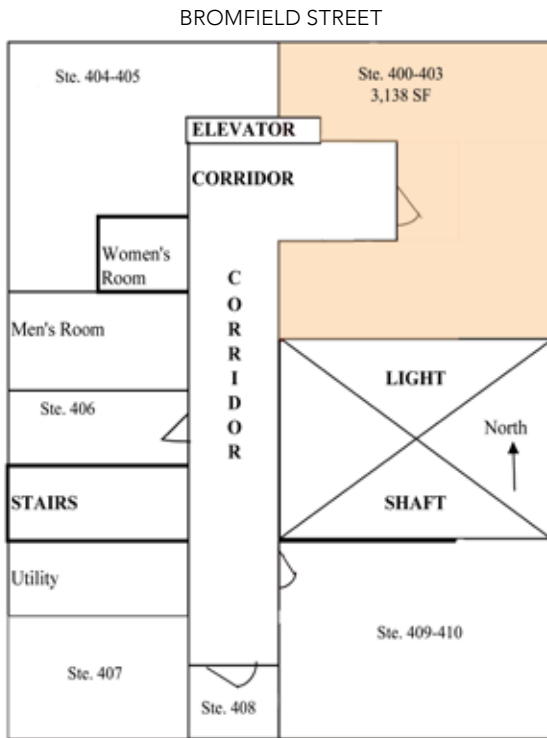


ASKING RATE

\$33 - \$35/RSF

4TH FLOOR: 3,138 RSF

5TH FLOOR: 250 - 1,278 RSF



BONNY L. DOORAKIAN | 617.850.9655 | bdoorakian@bradvisors.com



745 Boylston Street | Boston, MA 02116 | (T) 617.375.7900 | (F) 617.536.9566 | BRAdvisors.com