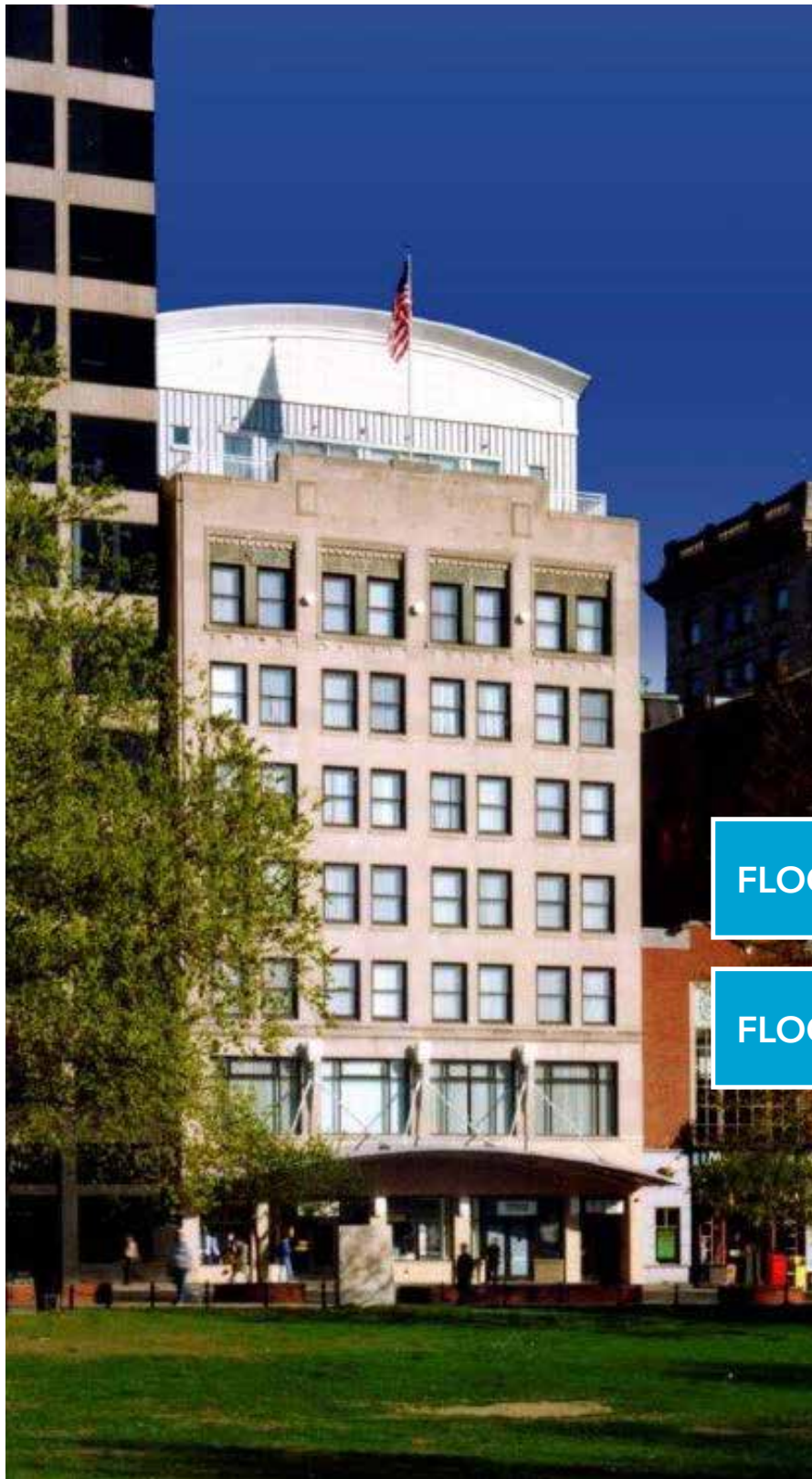


145 TREMONT

BOSTON, MA



FLOOR 6

Approximately 4,413 RSF
Available Aug 2019

FLOOR 5

Approximately 1,897 - 4,413 RSF
Available Aug 2019

BUILDING FEATURES

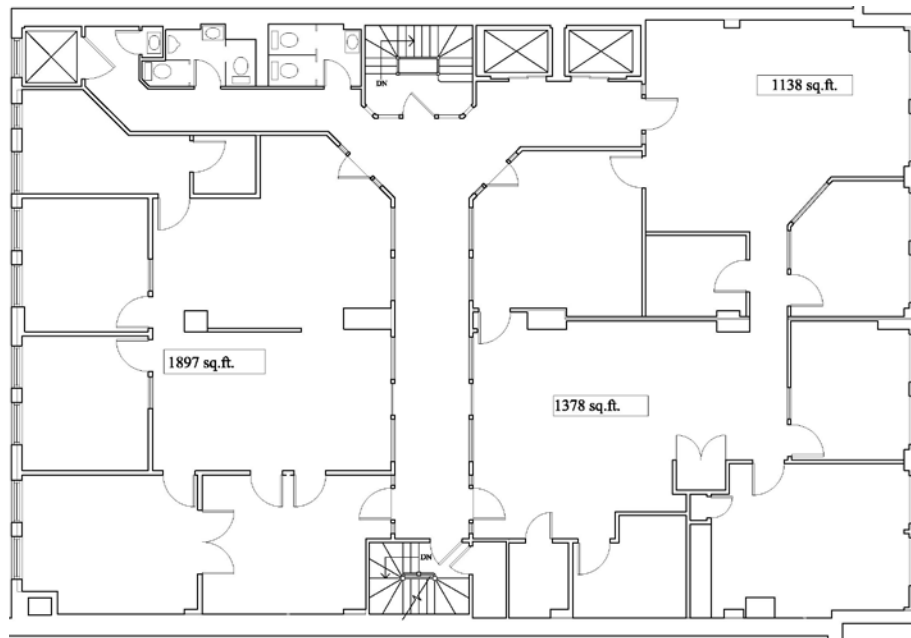
- 145 Tremont offers all the modern convenience of a Class A office building and is adjacent to the Commons and Park Street MBTA access.
- Convenient to the commons parking garage
- Full floor opportunities
- Flexible square footage options 1,897 - 4,413 SF



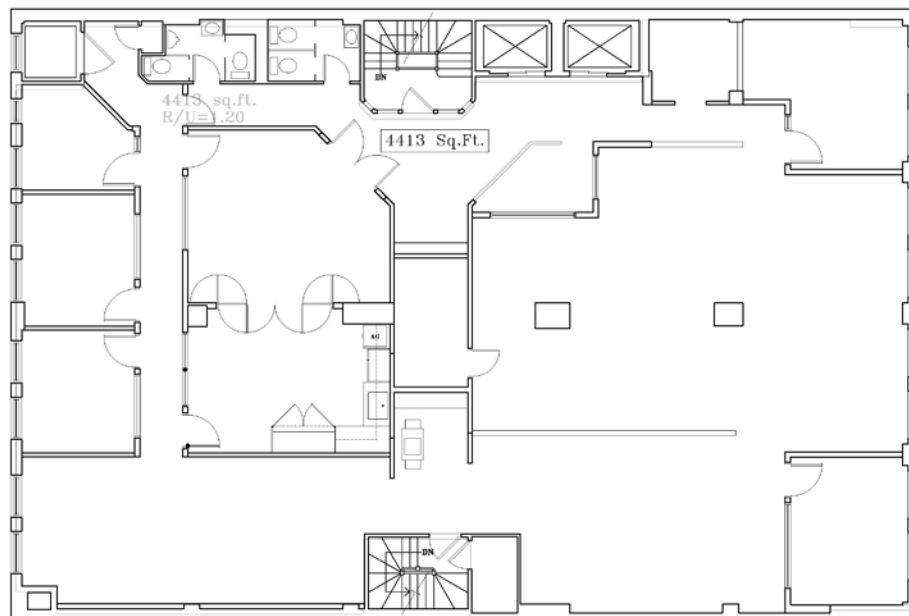
Boston Realty Advisors
ENTREPRENEURIAL AGILITY. INSTITUTIONAL EXPERTISE.



5TH FLOOR | 1,897 - 4,413 SF



6TH FLOOR | 4,413 SF



Boston Realty Advisors
ENTREPRENEURIAL AGILITY. INSTITUTIONAL EXPERTISE.

PETER BEAN
Managing Director
617.850.9639
pbean@bradvisors.com

CHRIS MCMAHON
Managing Director
617.721.6437
cmcmahon@bradvisors.com

RYAN M. HURD
Director
617.850.9665
rhurd@bradvisors.com

745 Boylston Street | Boston, MA | (T) 617.375.7900 | (F) 617.536.9566 | BRAdvisors.com

© Copyright Boston Realty Advisors. All rights reserved. The information contained here has been obtained through sources deemed reliable but cannot be guaranteed as to its accuracy. Any information of special interest should be obtained through independent verification.