

24 ROLAND STREET

OFFICE SPACE FOR LEASE • CHARLESTOWN, MA

1,910 SF AVAILABLE



Boston Realty Advisors
ENTREPRENEURIAL AGILITY. INSTITUTIONAL EXPERTISE.

Boston Realty Advisors is pleased to present 1,910 RSF for lease at 24 Roland Street. This "Brick & Beam" building features a plentiful amount of windows allowing for ample natural light and is located in between 2 of Boston's fastest growing submarkets.

AVAILABLE SPACE

1st Floor: 1,910 RSF

PRICING

Negotiable

TERM

3-5 years

AVAILABLE

Immediately

AMENITIES

- FREE on-site tenant parking.
- Loading dock access
- Conveniently located to MBTA's Sullivan Square T (Orange) and Bus routes.
- Wired for Comcast, Verizon (fiber) & Lighttower.
- Bike Parking



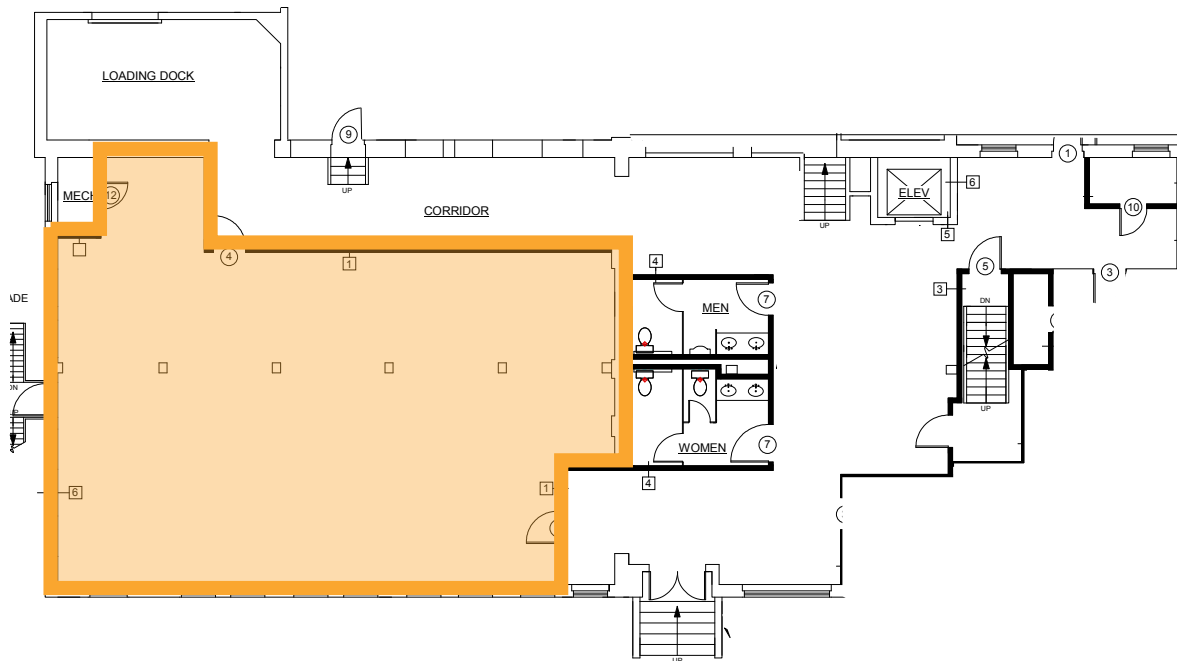
DRIVE TIMES

The Schrafft Center - 3 mins
Assembly Square - 6 mins
North Station - 9 mins
North End - 11 mins
Harvard Square - 13 mins



1ST FLOOR — 1,910 SF

Available Space



1st FLOOR



1st FLOOR



3rd FLOOR

BONNY L. DOORAKIAN
617.850.9655
bdoorakian@bradvisors.com

JUSTIN D. HARLOW
617.850.9613
jharlow@bradvisors.com

ROBERT F. LECLAIR
617.850.9614
rleclair@bradvisors.com



745 Boylston Street | Boston, MA 02116 | (T) 617.375.7900 | (F) 617.536.9566 | BRAdvisors.com

© Copyright Boston Realty Advisors. All rights reserved. The information contained here has been obtained through sources deemed reliable but cannot be guaranteed as to its accuracy. Any information of special interest should be obtained through independent verification.