

131 TREMONT

OFFICE SPACE FOR LEASE

4,235 RSF +/- IN CLASS B OFFICE BUILDING



131 Tremont Street is an eight-story mixed-use building situated at a premier location in the center of Downtown Boston. Across the street from Boston Common and situated at the corner of Tremont Street and the Winter Street Pedestrian Concourse, 131 Tremont Street offers exceptional access for commuters. The building is immediately adjacent to Park Street Station (Green/Red Line) and is a short walk to Downtown Crossing (Orange/Red) and Government Center (Green/Blue).

131 Tremont Street is conveniently located just blocks away from many of Boston's leading cultural attractions and venues such as Boston Common, the Theater District, Downtown Crossing, Financial District and the Freedom Trail. 131 Tremont Street enjoys quick access to numerous nearby eateries like Silvertones, Beantown Pub, Marliave, No. 9 Park, Chipotle, Kensington Station, Dunkin Donuts, Peets at Capital One and Starbucks, among others.



ASKING RATE

Negotiable



LEASE TERM

3 - 5 year term

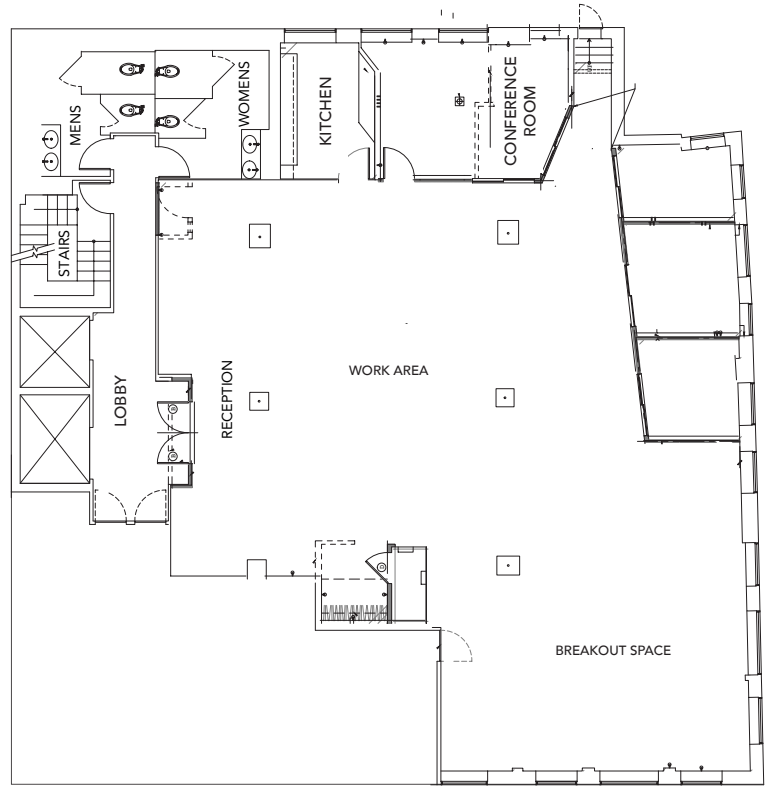


AVAILABLE SPACE

3rd Floor: 4,235 RSF +/-



3RD FLOOR | 4,235 RSF +/-



TREMONT STREET

SPECIFICATIONS

Total Size 45,000 SF

Available Space 4,235 RSF +/-

Term 3 - 5 year term

Floors Eight (8)

Elevators Two (2) - Passenger

BONNY L. DOORAKIAN
Managing Director & Partner
617.850.9655
bdoorakian@bradvisors.com

WILLIAM H. CATLIN, JR.
Managing Director & Senior Partner
617.850.9606
wcatlin@bradvisors.com

ROBERT F. LECLAIR
Managing Director & Partner
617.850.9614
rleclair@bradvisors.com



745 Boylston Street | Boston, MA | (T) 617.375.7900 | (F) 617.536.9566 | BRAdvisors.com

© Copyright Boston Realty Advisors. All rights reserved. The information contained here has been obtained through sources deemed reliable but cannot be guaranteed as to its accuracy. Any information of special interest should be obtained through independent verification.