



FEDERAL

BOSTON, MA



Rendering



4th Floor Reception Rendering



Boston Realty Advisors

ENTREPRENEURIAL AGILITY. INSTITUTIONAL EXPERTISE.

Boston Realty Advisors is pleased to present 1,258-5,149 SF for lease at 50 Federal Street. Located in the heart of Boston's Financial District, this 70,000 square foot, 10-story building overlooks the award-winning Post Office Square Park and is only steps away from countless amenities such as retail, dining, public transportation and parking.

The property is owned and managed by The Druker Company, Ltd.

AMENITIES

- Lobby Attendant
- On-site property management/ ownership
- Convenient to public transportation, including commuter rail at South Station, and the Red, Green & Orange T Lines at Downtown Crossing
- Steps to several parking garages and area amenities including the Langham and Wyndham Hotels, Equinox health club, Post Office Square Park, CVS, Dunkin Donuts, Starbucks, Pret a Manger and a wide variety of other eateries.

SPECIFICATIONS

Building Size	66,445 SF on 10 Floors
Available Space	7th Floor: 1,258 SF 8th Floor: 2,621 - 5,149 SF
Lease Term	3-5 Years
Lease Rate	Negotiable



Renderings done by ID8 design





GOVERNMENT CENTER **T**

CVS
pharmacy

DUNKIN'
DONUTS

P

Walgreens

P



THE LANGHAM
BOSTON

P

★ PRET A MANGER ★

T DOWNTOWN CROSSING



FedExOfficeSM
Print & Ship Services

P

P

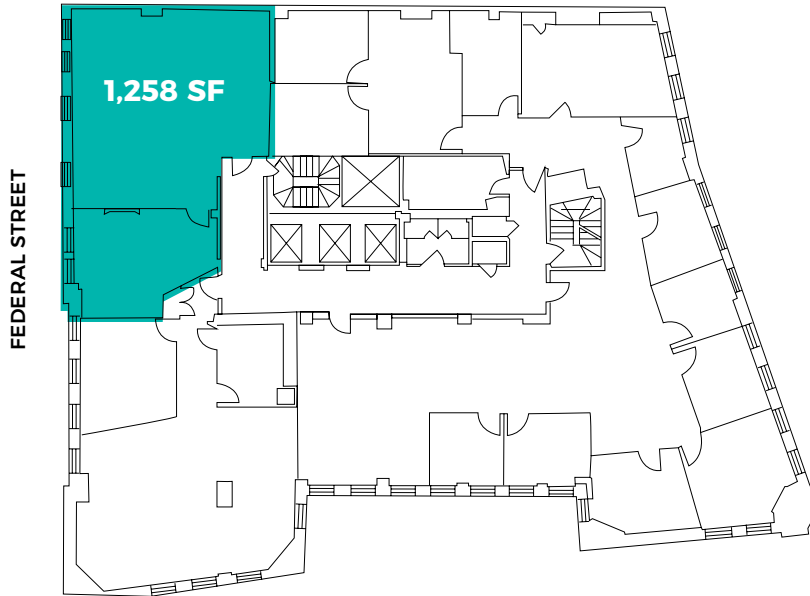
CVS
pharmacy

P

SOUTH STATION **T**

FLOOR PLANS

7TH FLOOR | 1,258 SF



8TH FLOOR | 2,621 - 5,149 SF

