



RETAIL SPACE FOR LEASE



110 NEWBURY STREET

— 1,073 SF —

# NEWBURY STREET: THE BUSIEST BLOCK

---



## NEW RESTAURANTS:

**205 Newbury:** Caffè Nero (UNDER CONSTRUCTION)

**209 Newbury:** Sweet Jesus (UNDER CONSTRUCTION)

**235 Newbury:** Serafina (UNDER CONSTRUCTION)

## NEW RETAIL:

**85 Newbury:** Indochino expansion (OPEN)

**88 Newbury:** Sephora Studio (OPEN). Newbury chosen for 1st location in the world

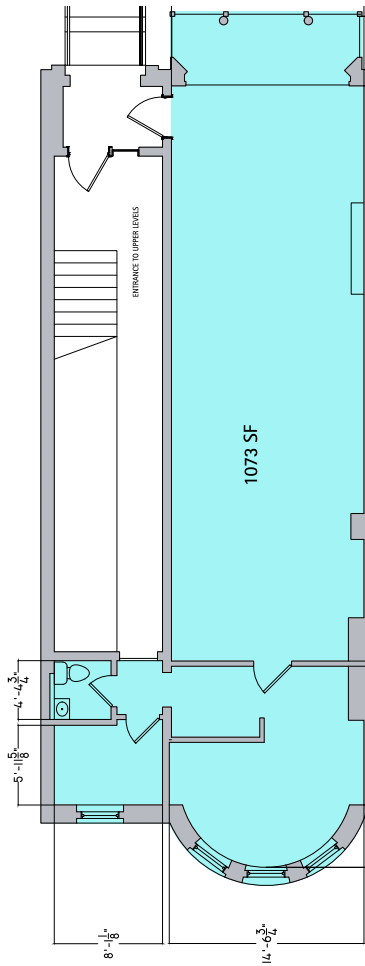
**114 Newbury:** Lush (OPEN)

**177 Newbury:** Tea Forte (OPEN)

**177 Newbury:** Credo Beauty, the leading emerging natural cosmetics brand (OPEN)

**240 Newbury:** Suit Supply 10k sf flagship (UNDER CONSTRUCTION)

# FLOOR PLANS



# ABOUT THE SPACE

## APPROXIMATE SIZE

- › 1,073 sf
- › Store Frontage 14'
- › Ceiling Heights 9<sup>1/2</sup>

## LOCATION

- › Located on the third block of Newbury between Clarendon and Dartmouth Streets

## SITE STATUS

- › Occupied by Pratesi

## AVAILABILITY

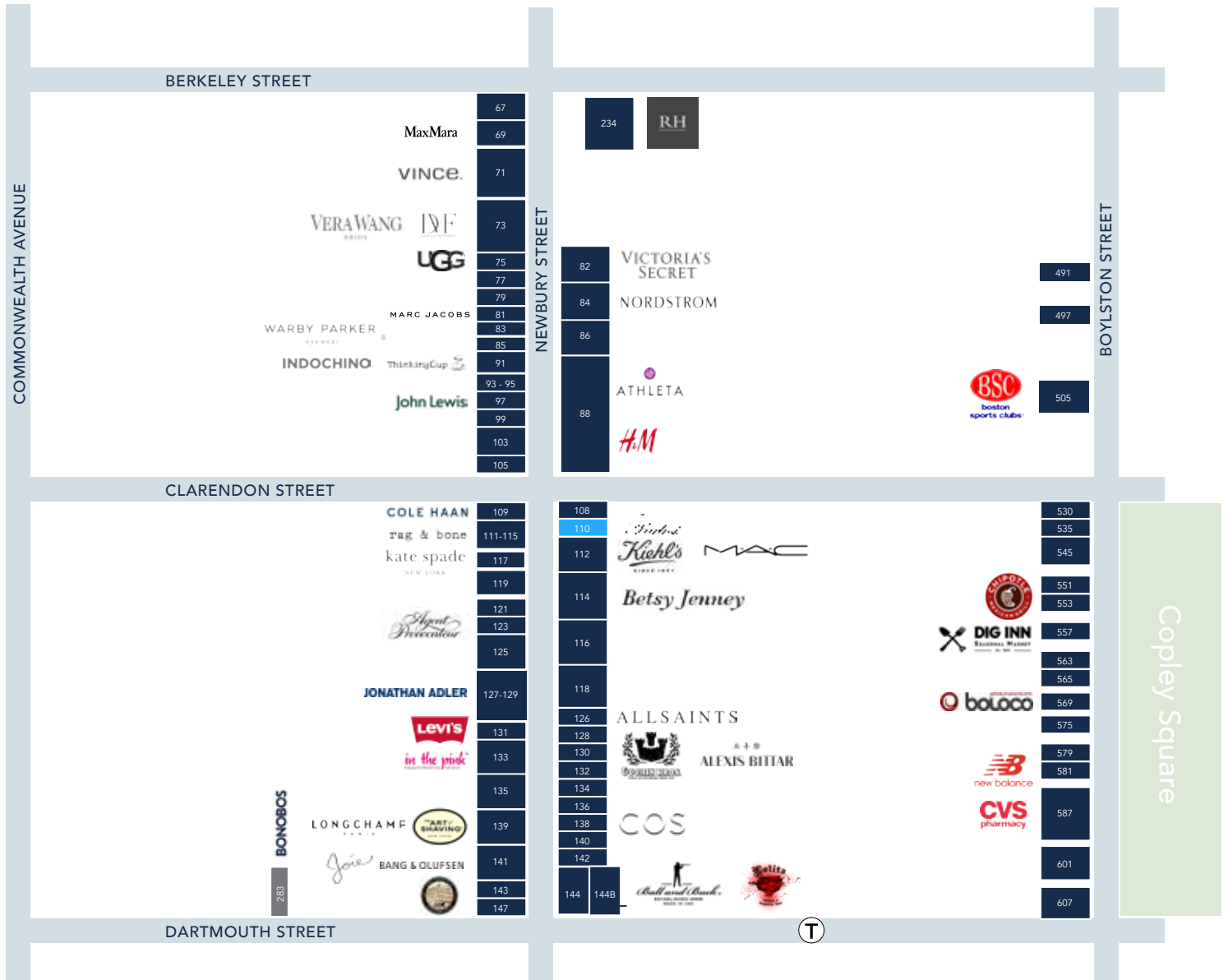
- › Available Soon

## COMMENTS

- › Highly visible location
- › Move in condition



# STREET GUIDE



WHITNEY E. GALLIVAN  
617.850.9612  
wgallivan@bradvisors.com

MICHAEL A. D'HEMECOURT  
617.850.9670  
mdhemecourt@bradvisors.com

ALEC TARBERRY  
617.850.9663  
atarberry@bradvisors.com

CHRISTOPHER J. DONATO  
617.850.9618  
cdonato@bradvisors.com

JOE WAGNER  
617.850.9675  
jwagner@bradvisors.com



745 Boylston Street | Boston, MA | (T) 617.375.7900 | (F) 617.536.9566 | BRAdvisors.com

© Copyright Boston Realty Advisors. All rights reserved. The information contained here has been obtained through sources deemed reliable but cannot be guaranteed as to its accuracy. Any information of special interest should be obtained through independent verification.