



# FEDERAL

BOSTON, MA



Rendering



4th Floor Reception Rendering



**Boston Realty Advisors**

ENTREPRENEURIAL AGILITY. INSTITUTIONAL EXPERTISE.



**Boston Realty Advisors** is pleased to present 1,258-6,758 SF for lease at 50 Federal Street. Located in the heart of Boston's Financial District, this 70,000 square foot, 10-story building overlooks the award-winning Post Office Square Park and is only steps away from countless amenities such as retail, dining, public transportation and parking.

The property is owned and managed by The Druker Company, Ltd.



Renderings done by ID8 design



## AMENITIES

- Lobby Attendant
- On-site property management/ownership
- Convenient to public transportation, including commuter rail at South Station, and the Red, Green & Orange T Lines at Downtown Crossing
- Steps to several parking garages and area amenities including the Langham and Wyndham Hotels, Equinox health club, Post Office Square Park, CVS, Dunkin Donuts, Starbucks, Pret a Manger and a wide variety of other eateries.

## SPECIFICATIONS

**Building Size** 70,000 SF on 10 Floors

**Available Space** 2nd Floor: 2,315 SF  
4th Floor: 6,758 SF  
6th Floor: 2,301 SF  
7th Floor: 1,258 SF  
8th Floor: 5,149 SF  
(Avail. 3/1/18)  
9th Floor: 2,518 SF  
(Avail. 3/1/18)

**Lease Term** 3-5 Years

**Lease Rate** Negotiable





GOVERNMENT CENTER **T**

**CVS**  
pharmacy

**DUNKIN'**  
**DONUTS**

**Walgreens**

THE LANGHAM  
BOSTON

★ **PRET A MANGER** ★

**FedExOffice**<sup>SM</sup>  
Print & Ship Services

**T** DOWNTOWN CROSSING

SOUTH STATION **T**

**CVS**  
pharmacy

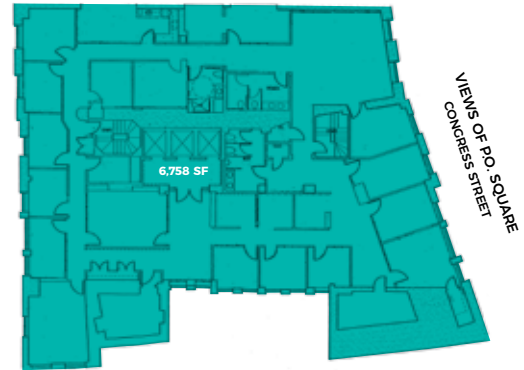


# FLOOR PLANS

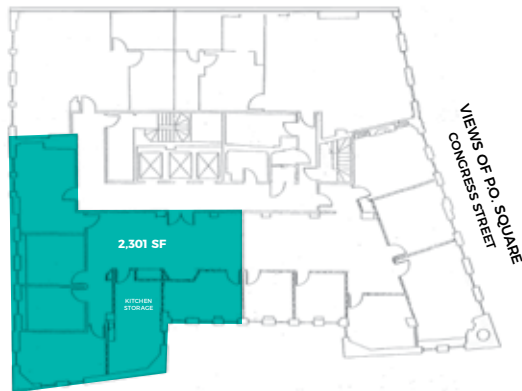
2<sup>ND</sup> FLOOR | 2,315 SF



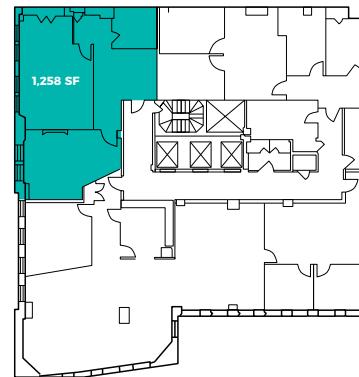
4<sup>TH</sup> FLOOR | 6,758 SF



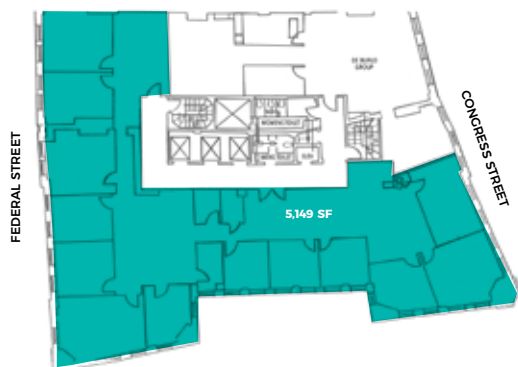
6<sup>TH</sup> FLOOR | 2,301 SF



7<sup>TH</sup> FLOOR | 1,258 SF



8<sup>TH</sup> FLOOR | 5,149 SF



9<sup>TH</sup> FLOOR | 2,518 SF

