

# 10 CITY SQUARE

OFFICE BRICK & BEAM SPACE • CHARLESTOWN, MA



## NEW OWNERSHIP

- 6<sup>TH</sup> FLOOR SPEC SUITE COMPLETE!
- LOBBY UPGRADES PLANNED



### SPACE

4<sup>th</sup> Floor: 2,412 SF  
Entire 6<sup>th</sup> Floor: 5,628 SF



### TERM

3 - 5 Years



### PRICING

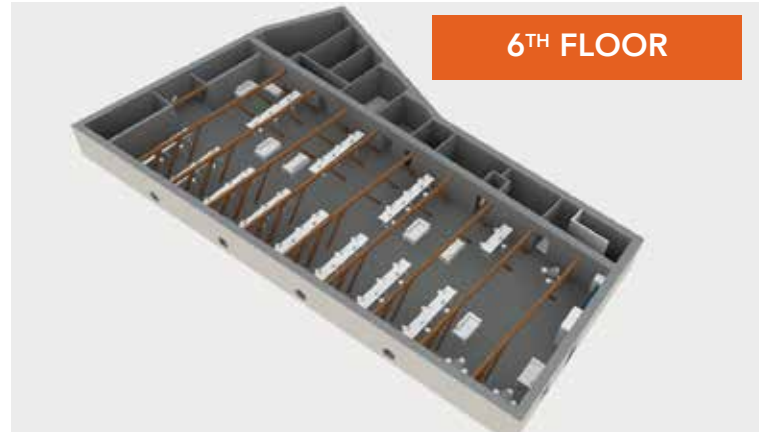
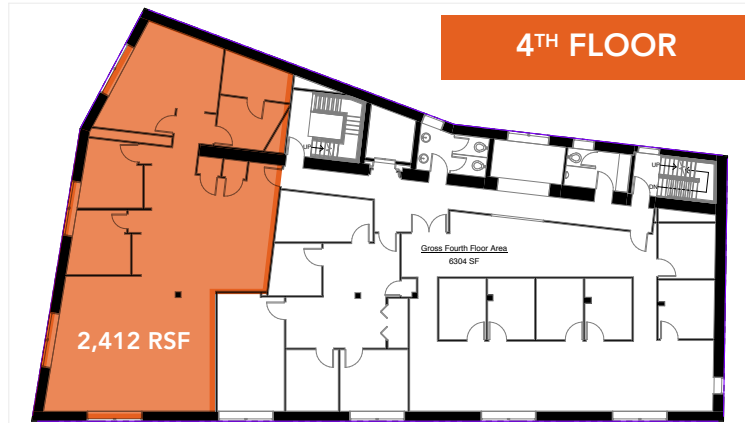
Low to Mid \$30s



### PARKING

Up to 10 Spaces  
for Lease

Boston Realty Advisors is pleased to offer **2,412-5,628 SF for lease at Ten City Square in Charlestown**. This boutique Class B building offers both a full floor with exposed beams and a highly sought-after end cap suite with views of City Square Park.



**ROBERT F. LECLAIR**  
617.850.9614  
rleclair@bradvisors.com

**WILLIAM H. CATLIN, JR.**  
617.850.9606  
wcatlin@bradvisors.com

**BONNY L. DOORAKIAN**  
617.850.9655  
bdoorakian@bradvisors.com

**JUSTIN D. HARLOW**  
617.850.9613  
jharlow@bradvisors.com



**Boston Realty Advisors**  
ENTREPRENEURIAL AGILITY. INSTITUTIONAL EXPERTISE.

745 Boylston Street | Boston, MA 02116 | (T) 617.375.7900 | (F) 617.536.9566 | BRAdvisors.com

© Copyright Boston Realty Advisors. All rights reserved. The information contained here has been obtained through sources deemed reliable but cannot be guaranteed as to its accuracy. Any information of special interest should be obtained through independent verification.