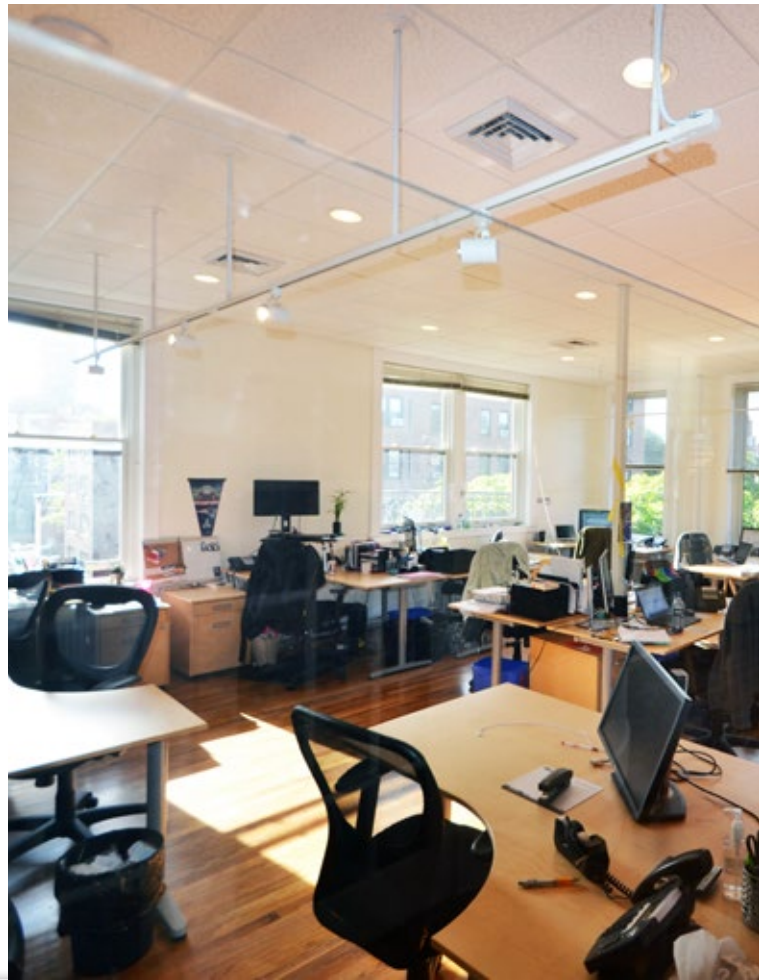


FOR  
LEASE



# 39-45 NEWBURY STREET

## BOSTON, MA

Unique corner office suite built out with two large conference rooms, kitchen, reception and large open area. Two sides of windows facing northwest on Berkeley Street provide great afternoon light. Hardwood floors and 10 foot high ceilings with immediate elevator identity. Secure access from elevator lobby.



**ASKING PRICE**  
Negotiable



**AVAILABLE**  
Immediately

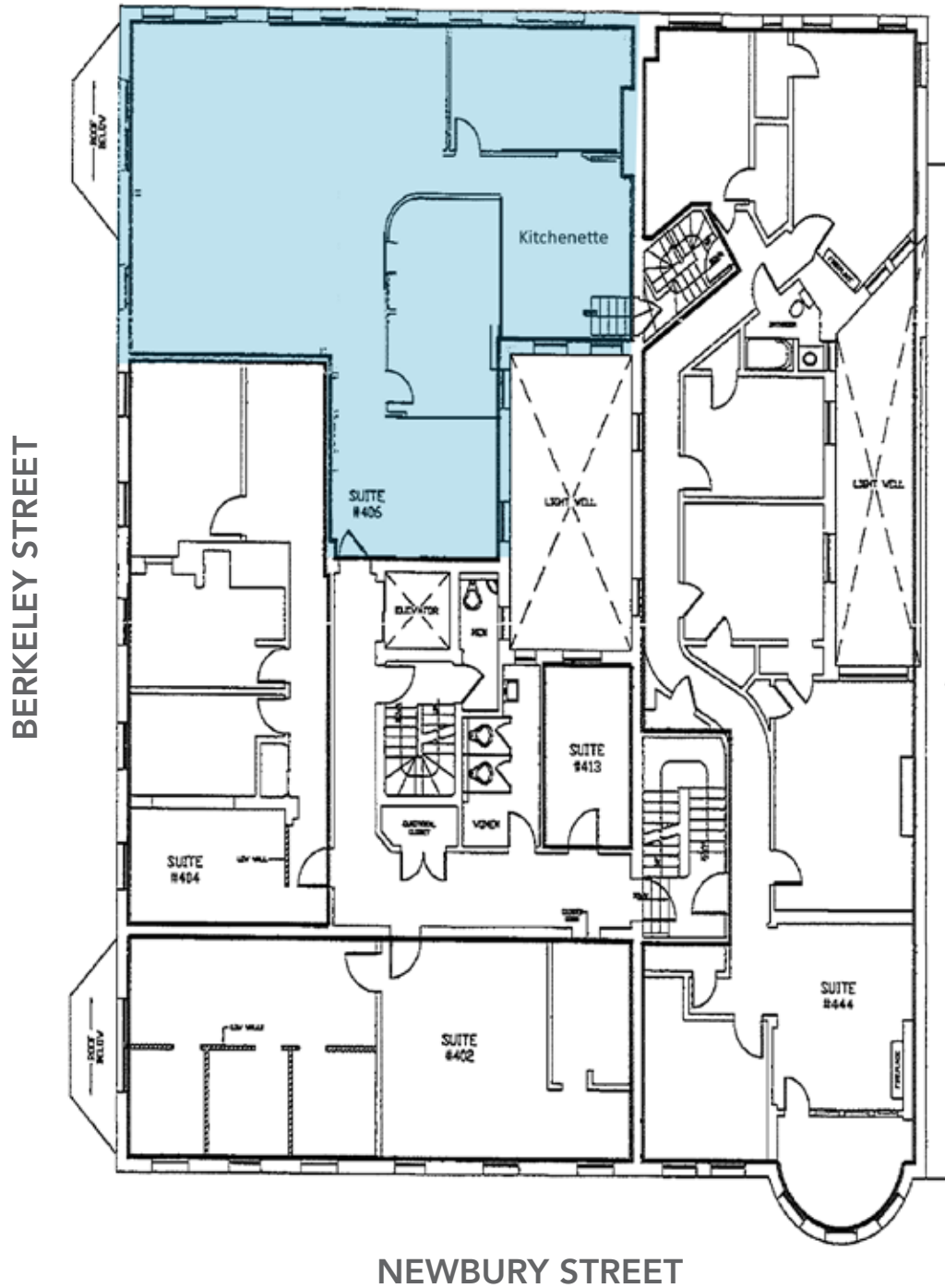


**AVAILABLE SPACE**  
4<sup>th</sup> Floor: 1,824 RSF  
5<sup>th</sup> Floor: 2,100 RSF



**Boston Realty Advisors**  
ENTREPRENEURIAL AGILITY. INSTITUTIONAL EXPERTISE.

# 4<sup>th</sup> Floor | 1,824 RSF



**PETER BEAN**

*Managing Director*  
617.850.9639  
pbean@bradvisors.com



**Boston Realty Advisors**  
ENTREPRENEURIAL AGILITY. INSTITUTIONAL EXPERTISE

745 Boylston Street | Boston, MA | (T) 617.375.7900 | (F) 617.536.9566 | BRAdvisors.com

© Copyright Boston Realty Advisors. All rights reserved. The information contained here has been obtained through sources deemed reliable but cannot be guaranteed as to its accuracy. Any information of special interest should be obtained through independent verification.