

RETAIL SPACE FOR LEASE

950
MASSACHUSETTS
AVENUE

CAMBRIDGE, MA



± 1,100 SF



Boston Realty Advisors
ENTREPRENEURIAL AGILITY. INSTITUTIONAL EXPERTISE.

HARVARD UNIVERSITY

- 6,700 undergraduate students
- 14,500 graduate students
- 18,000 employees

GAP **URBAN OUTFITTERS**
Peet's Coffee & Tea **J.P. LICKS**
MIKE'S PASTRY **SHAKE SHACK**

950
MASSACHUSETTS
AVENUE

Cambridge



Boston











Somerville

2016 AREA DEMOGRAPHICS

	0.5 MILE RADIUS	1 MILE RADIUS	1.5 MILE RADIUS
2016 Total Population	25,301	69,063	132,595
2016 Total Households	11,323	27,551	50,737
2016 Average Household Income	\$104,713	\$99,126	\$97,426

CENTRALIZED LOCATION

From Central Square T

- Harvard Square  3 min
- Porter Square  6 min
- Alewife  13 min
- Kendall/MIT  2 min
- Charles/MGH  4 min
- Park Street  7 min
- DTX  9 min
- South Station  12 min

MBTA RIDERSHIP



RED LINE

280,851
passengers per day

Bank of America

Citizens Bank

T-Mobile

Leader Bank



Walgreens

MART



DUNKIN' DONUTS

clover

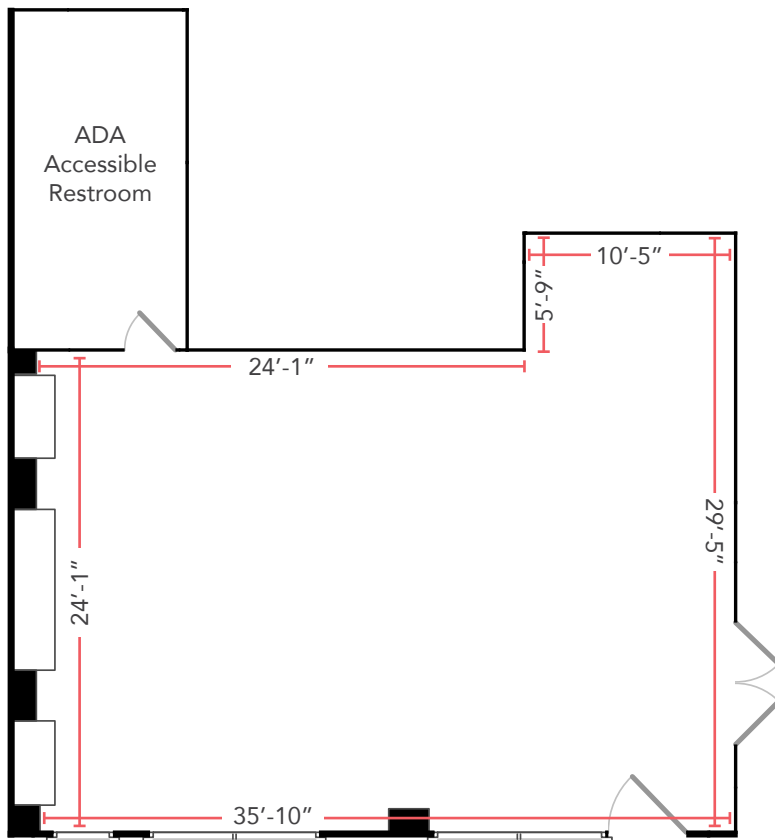
M.I.T

- 4,512 undergraduate students
- 6,807 graduate students
- 11,840 employees

Massachusetts Institute of Technology



FLOOR PLAN



Massachusetts Avenue



PROPERTY HIGHLIGHTS

- 0.4 mile walk to Central Square T station
- 0.6 mile walk to Harvard Square T station
- Newly constructed ADA accessible restroom
- Excellent street presence with floor to ceiling windows

RETAIL

MICHAEL A. D'HEMERCOURT
Managing Director & Senior Partner
 617.850.9670
 mdhemecourt@bradvisors.com

WHITNEY GALLIVAN
Managing Director & Partner
 617.850.9612
 wgallivan@bradvisors.com

ALEC TARBERRY
Director
 617.850.9663
 atarberry@bradvisors.com

SHARAYA JOHNSON
Associate
 617.850.9627
 sjohnson@bradvisors.com



745 Boylston Street | Boston, MA 02116 | (T) 617.375.7900 | (F) 617.536.9566 | BRAdvisors.com

© Copyright Boston Realty Advisors. All rights reserved. The information contained here has been obtained through sources deemed reliable but cannot be guaranteed as to its accuracy. Any information of special interest should be obtained through independent verification.