

RESTAURANT & RETAIL SPACE FOR LEASE

+/- 5,348 SF

20 ASHBURTON PL
BOSTON, MA

#20ASHBURTON

SOMERVILLE

CHARLESTOWN

MONSIGNOR O'BRIEN HIGHWAY



T GARDEN



#20ASHBURTON

BOSTON MUNICIPAL COURT



CHARLES RIVER PLAZA



MGH 1811



OneBeacon INSURANCE

CAMBRIDGE ST



SUFFOLK UNIVERSITY BOSTON RESIDENCE HALL



BEACON HILL



THE LIBERTY & LUXURY COLLECTION HOTEL

MASSACHUSETTS STATE HOUSE

SUFFOLK UNIVERSITY BOSTON



BOWDOIN ST



BEACON ST

BOSTON COMMON

LOCATION SNAPSHOT BOSTON, MA

POPULATION: 40,228

MEDIAN AGE: 33.3

AVERAGE HOUSEHOLD INCOME: \$121,364

AVERAGE DISPOSABLE INCOME: \$83,782



NORTH
END



BOSTON
CITY HALL



TRANSPORTATION

20 Ashburton is located in the heart of Boston and is surrounded by multiple MBTA subway stations. The surrounding MBTA stations allow access to the Red, Green, Orange and Blue Lines all of which are within 0.5 miles of 20 Ashburton Place. With such a broad range of access points via subway, bus and car, traveling to and from the area prove to be a simple task for residents and visitors alike.



UNMATCHED LOCATION

Centrally located in the hub of downtown Boston and directly across from the iconic Massachusetts State House, 20 Ashburton Place is set in one of the most desired neighborhoods in Boston. Multiple universities, hospitals and landmark destinations are within walking distance of 20 Ashburton and bring an influx of residents and visitors to the area year round. Notable neighboring landmarks include the Boston Common, Public Garden, North End, Mass General Hospital, Suffolk University and Beacon Hill, to name a few.



NOTABLE INSTITUTIONS AND DESTINATIONS

WORLD-RENOWNED MEDICAL INSTITUTIONS

Massachusetts General Hospital:

- Named 2015-2016's top hospital in the nation by U.S. News & World Reports

EDUCATIONAL INSTITUTIONS

Suffolk University:

- 8,046 students (International Students make up 18%)

Emerson College:

- 4,515 students / 456 faculty

LOCAL RETAIL & RESTAURANT DESTINATIONS

Within 0.5 miles:

- North End
- Faneuil Hall
- Charles Street - Beacon Hill



#20ASHBURTON



CVS

WHOLE FOODS MARKET

au bon pain

CLINK.

SCAMPO

FIN TALE BAGEL

KING & I

PANIFICIO

PRESSED

Tatte

THE PARAMOUNT

Bin 26 ENOTECA

UPPER CRUST

小尾菜 Little Lamb

THE GARDENS

THESEVENS

ARTÚ

THE HUNGRY I

TOSCANO

BIB

BEACON HILL HOTEL & BISTRO

ANTONIO'S

the maison

ANNA'S TAQUERIA

THE HILL TAVERN

Griddler's BURGERS & DOGS

서울 SEUL

Tip Tap Room

Blue Fuji

GROTTO

the KINSALE

Panera

ZO

piperi

CAPITOL COFFEE HOUSE

SCOLLY SQUARE

21 AMENDMENT

ZEN

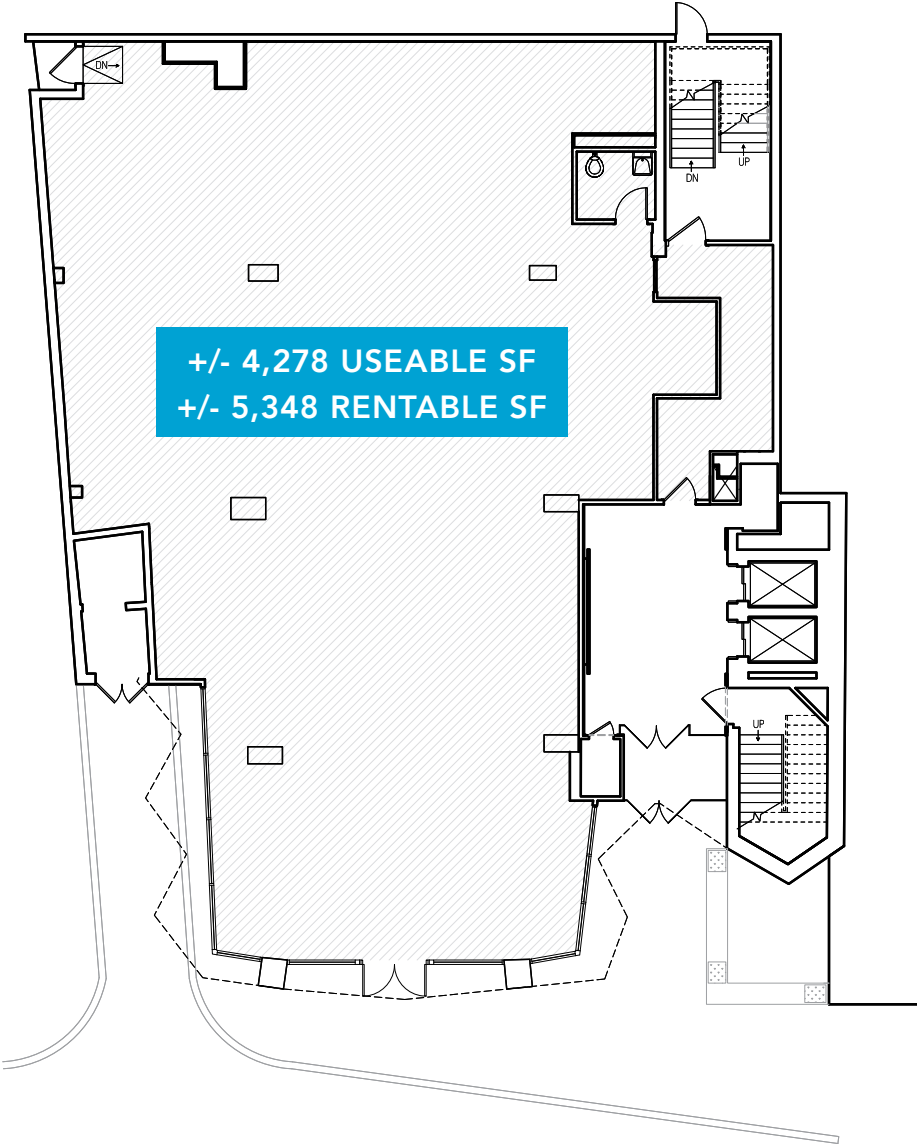
Emmets

Carrie Nation

Mooo...



FLOOR PLAN



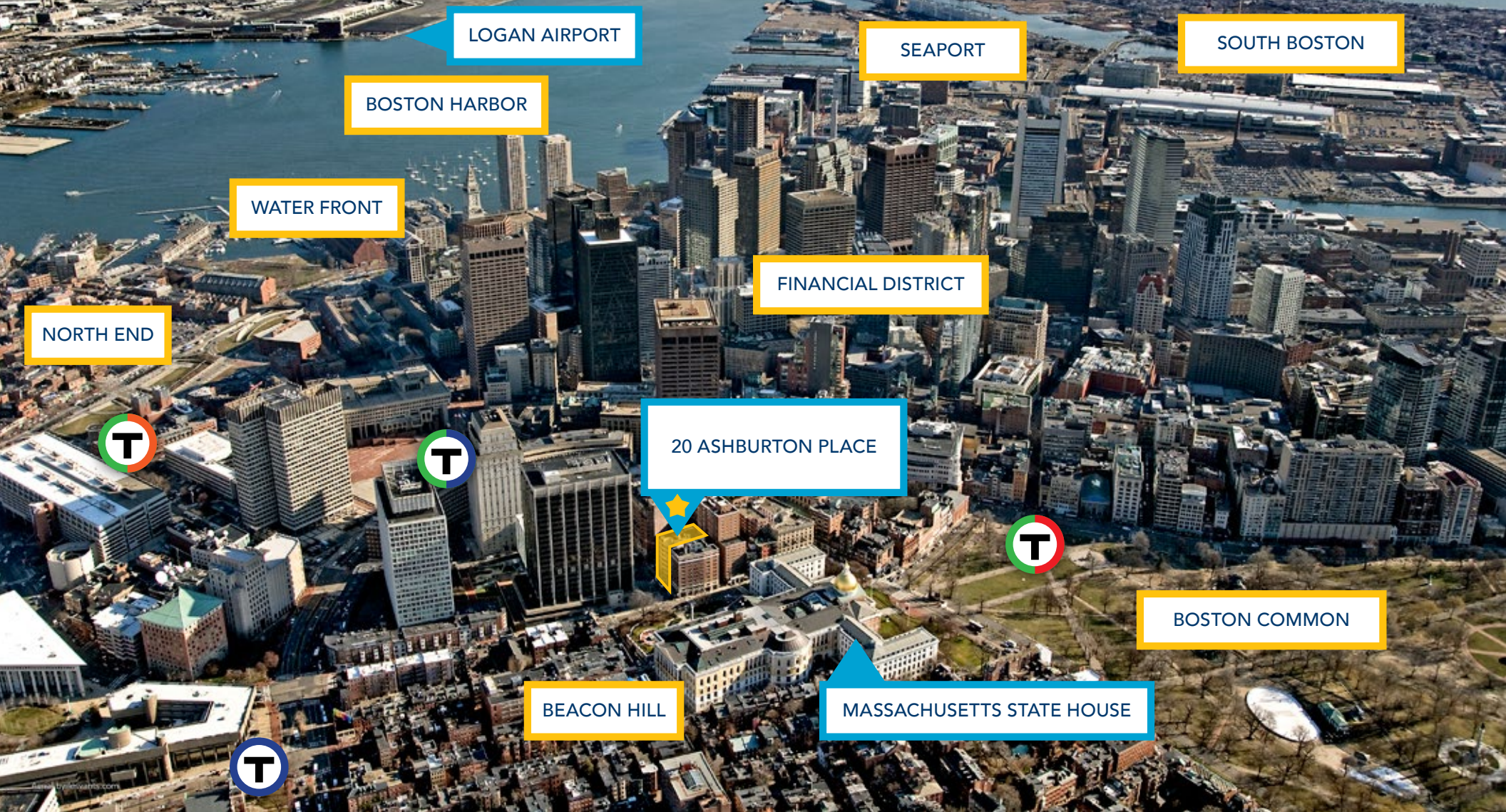
ASHBURTON PLACE

BUILDING RENDERINGS



ACORN STREET • BEACON HILL





LOGAN AIRPORT

SEAPORT

SOUTH BOSTON

BOSTON HARBOR

WATER FRONT

NORTH END

FINANCIAL DISTRICT

20 ASHBURTON PLACE

BOSTON COMMON

BEACON HILL

MASSACHUSETTS STATE HOUSE

RETAIL

MICHAEL A. D'HEMECTOURT
617.850.9670
mdhemecourt@bradvisors.com

WHITNEY E. GALLIVAN
617.850.9612
wgallivan@bradvisors.com

JAIME A. RUSSELL
617.850.9663
jrussell@bradvisors.com

CHRISTOPHER J. DONATO
617.850.9618
cdonato@bradvisors.com



745 Boylston Street | Boston, MA | (T) 617.375.7900 | (F) 617.536.9566 | BRAdvisors.com