



JOIN



655-659 TREMONT STREET



BOSTON'S FAVORITE
ALTERNATIVE
ICE CREAM

AVAILABLE SPACE

± 1,246 SF
ground level

FOR LEASE

655-659 TREMONT ST | SOUTH END | BOSTON, MA



Boston Realty Advisors
ENTREPRENEURIAL AGILITY. INSTITUTIONAL EXPERTISE.



BACK BAY

DARTMOUTH ST

COLUMBUS AVE

SOUTH END

TREMONT ST

TREMONT

skoah.

DAVIDS TEA



SEAC >>>>
SOUTH END ATHLETIC COMPANY

W. BROOKLINE ST



SAULT



LAURA PRESHONG



THE BEEHIVE



U26 OYSTERS



ANTHROPOLICAN



AQUITAINE



KITCHEN



UNION



WASHINGTON ST

HUDSON
MICHELLE WILLEY

FLAVOR

LAURENCE

THE WHOLE GRAIN

SIENA FARMS

THE WHOLE GRAIN

M

lock

SOUTH END BUTTERY

EMERY & CO.

PATCH NYC

lekker

lock

Markets

VIOLA LOVELY

GALLOWAYS

Boston
CHOPS

GASLIGHT
BREADS

DARTMOUTH ST



LOCATION SNAPSHOT

POPULATION: 56,427

MEDIAN AGE: 34.4

AVERAGE HOUSE HOLD INCOME: \$120,189

AVERAGE DISPOSABLE INCOME: \$83,665



TRANSPORTATION

655-659 Tremont Street is set in an ideal transit oriented location. The area offers access to the orange and green T lines, numerous bus lines, as well as the Back Bay train station. The ideal location of Tremont Street also allows residents the ability to walk to surrounding neighborhoods with ease. South Station, The Prudential Center, the Financial District and The Boston Common and Public Garden are all within one mile of **655-659 Tremont Street** and offer a picturesque walk through historic Boston.



UNMATCHED LOCATION

655-659 Tremont Street occupies a prominent corner location on the South End's primary retail corridor. The brick bow fronted structure of many of the South End buildings, offer one of the most esthetically pleasing areas in Boston to be a part of. This prime location allows for plenty of foot traffic as well, residents and tourists alike populate the streets no matter what time of day or year.

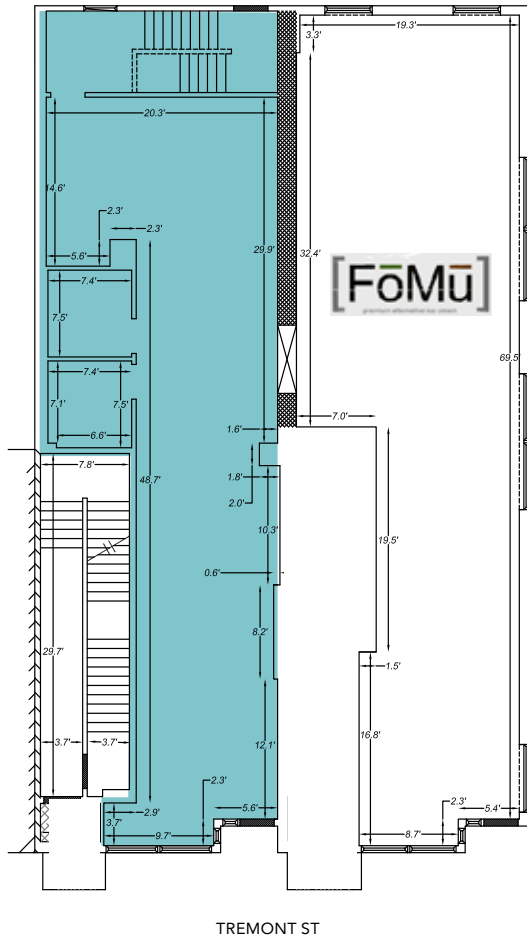


EXECUTIVE SUMMARY

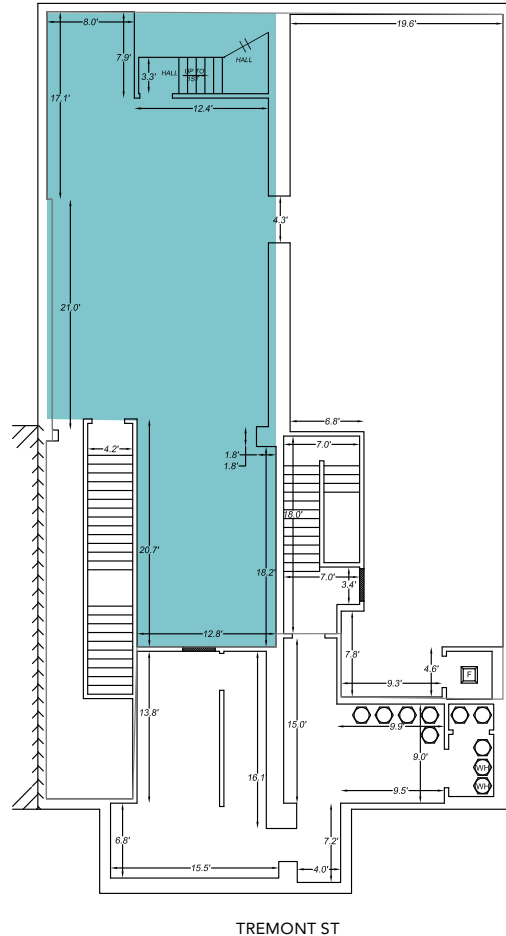
655–659 Tremont Street is located in the heart of Boston’s elegant South End neighborhood. Known for its eclectic restaurant offerings, fine brownstone homes and close proximity to one of the United States’ most exclusive shopping destinations, the South End is quickly becoming the city’s most desirable market.

The property consists of ± 1,246 SF of prime ground level space on the South End’s busiest retail corridor. FoMu, a local boutique ice cream parlor and cafe that offers a healthy twist on traditional ice cream, has officially opened its doors in the adjacent space. The expansion of FoMu into the South End will continue to attract residents and visitors of all types from around the city.

FIRST FLOOR



BASEMENT



■ AVAILABLE SPACE

MICHAEL A. D'HEMECOURT
617.850.9670
mdhemecourt@bradvisors.com

WHITNEY E. GALLIVAN
617.850.9612
wgallivan@bradvisors.com

JAIME A. RUSSELL
617.850.9663
jrussell@bradvisors.com



745 Boylston Street | Boston, MA | (T) 617.375.7900 | (F) 617.536.9566 | BRAdvisors.com

© Copyright Boston Realty Advisors. All rights reserved. The information contained here has been obtained through sources deemed reliable but cannot be guaranteed as to its accuracy. Any information of special interest should be obtained through independent verification.