

NEWBURY

COLLECTION

EXPLORE LUXURY



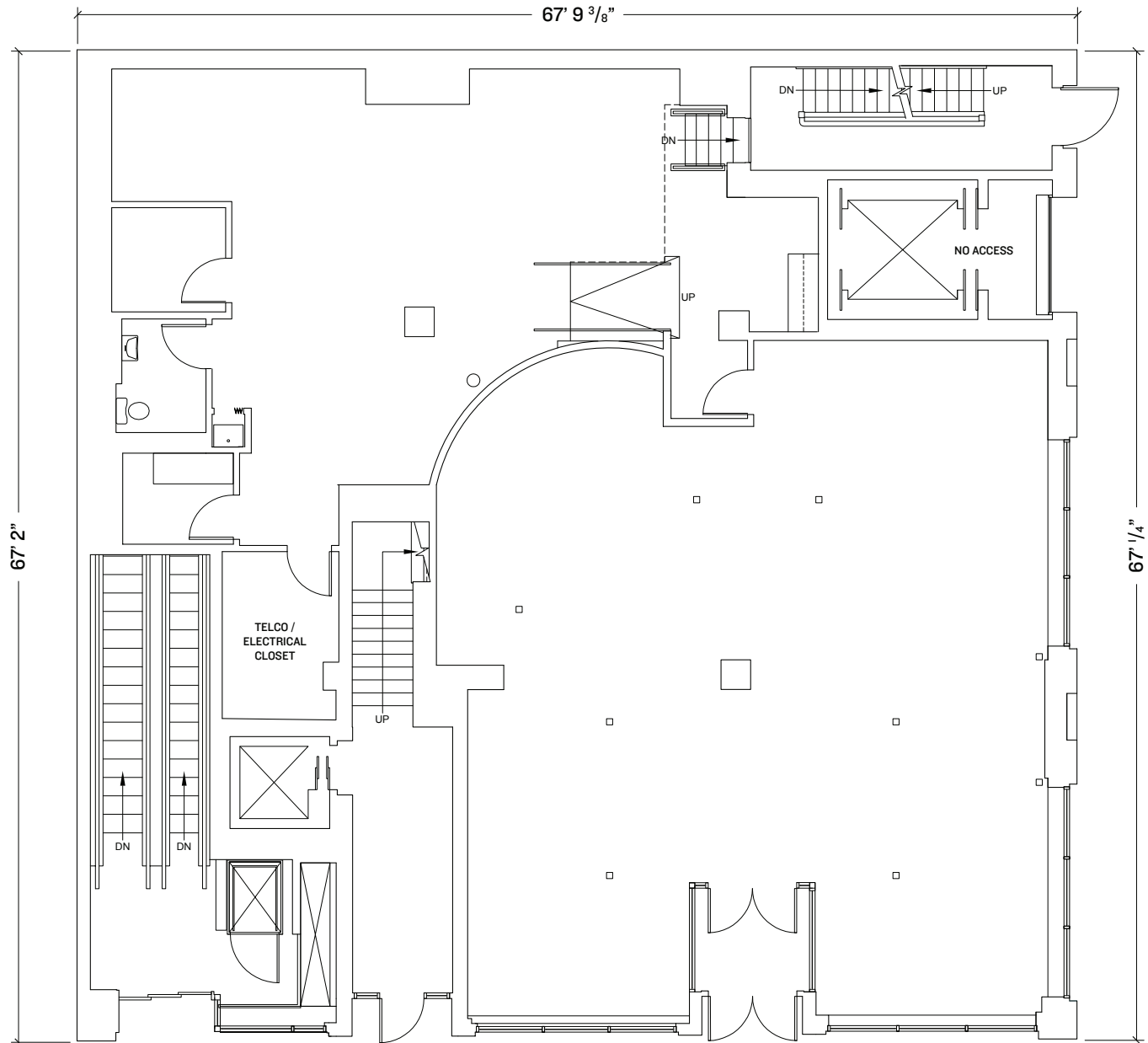
899 BOYLSTON STREET | 3,517 SF |

FOR RETAIL LEASING INFORMATION, PLEASE CONTACT:

Whitney Gallivan | Boston Realty Advisors | wgallivan@bradvisors.com | 617.850.9612

899 BOYLSTON STREET

Street Level - 3,517 Square Feet



FOR RETAIL LEASING INFORMATION, PLEASE CONTACT:
Whitney Gallivan | Boston Realty Advisors | wgallivan@bradvisors.com | 617.850.9612

THENEWBURYCOLLECTION.NET



899 BOYLSTON STREET

Street Level - 3,517 Square Feet



ABOUT THE SPACE

APPROXIMATE SIZE

- › 3,517 sf Street Level
- › 60'+ of wraparound frontage
- › Ceiling height is 14'+

LOCATION

- › Corner of Boylston & Gloucester Streets

SITE STATUS

- › Vacant - Formerly Staples

AVAILABILITY

- › Immediate

COMMENTS

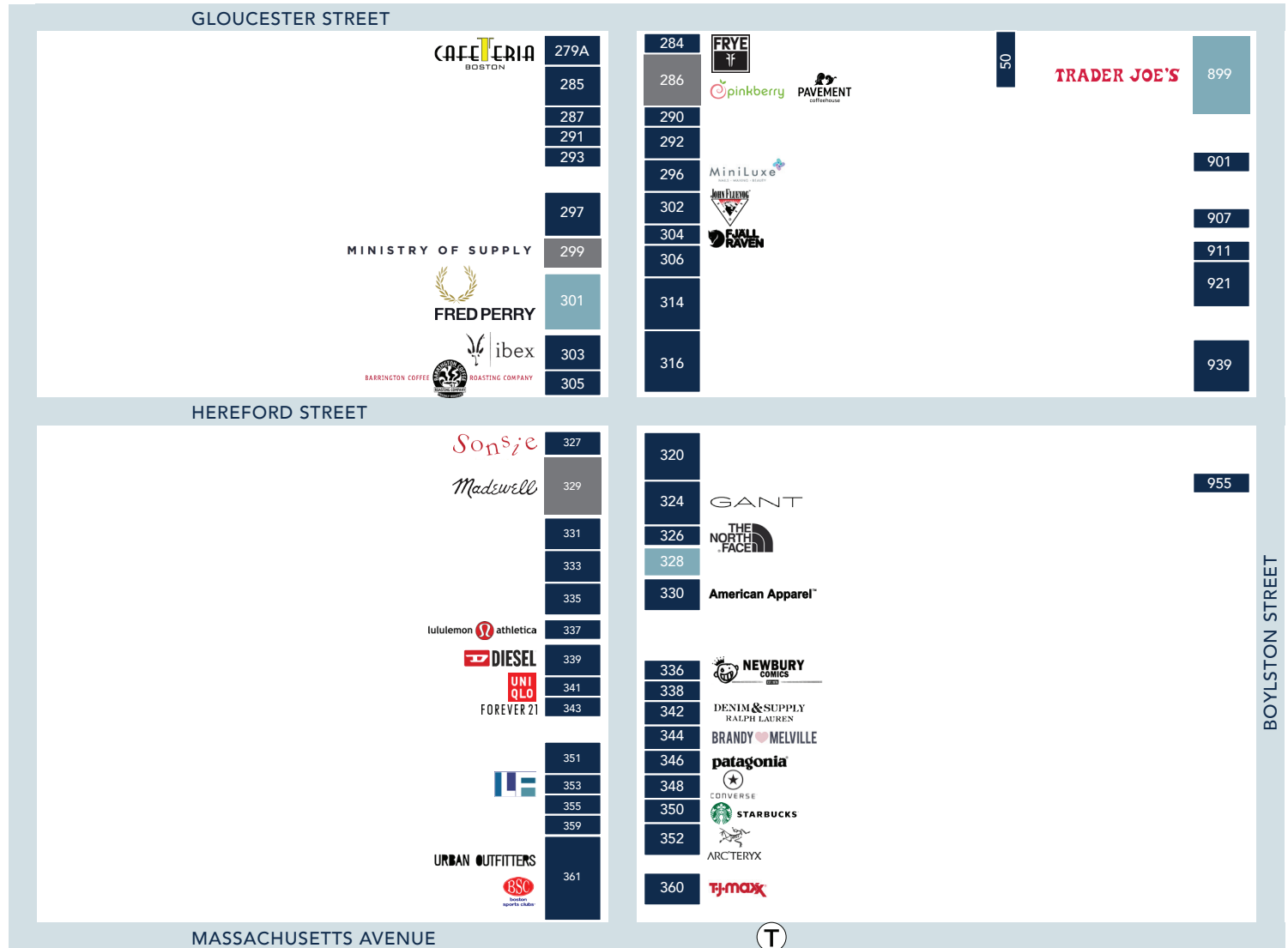
- › Amazing corner presence on Boylston Street
- › Directly across the Street from Hynes Convention Center and the new Eataly (coming soon)

899 BOYLSTON STREET

Street Level - 3,517 Square Feet

STREET GUIDE

AVAILABLE RETAIL SPACE
NEWBURY COLLECTION PORTFOLIO



FOR RETAIL LEASING INFORMATION, PLEASE CONTACT:
Whitney Gallivan | Boston Realty Advisors | wgallivan@bradvisors.com | 617.850.9612

THE NEWBURY COLLECTION.NET

