



# OFFICE SPACE FOR LEASE

43 Bowdoin Street · Boston, MA

2,100 RSF ON BEACON HILL

Boston Realty Advisors is pleased to present 43 Bowdoin Street for lease. The building offers 2,100 SF of newly renovated office space contiguous over the 2<sup>nd</sup>, 1<sup>st</sup> and lower level. This converted Beacon Hill brownstone offers exposed brick & beam space just steps from the State House and Suffolk University.



## AVAILABLE SPACE

2,100 RSF



## TIMING

Available Immediately



## PRICING

High \$20's/SF



**Boston Realty Advisors**

ENTREPRENEURIAL AGILITY. INSTITUTIONAL EXPERTISE.



LOGAN AIRPORT

One International Place

Two International Place

FINANCIAL DISTRICT

One Boston Place

One Beacon

NORTH END

43  
BOWDOIN  
STREET

Cambridge St



MASSACHUSETTS  
GENERAL HOSPITAL





Federal Reserve Bank

100 Summer

One Lincoln

33 Arch

Massachusetts State House

BOSTON COMMON

BEACON HILL

Charles St



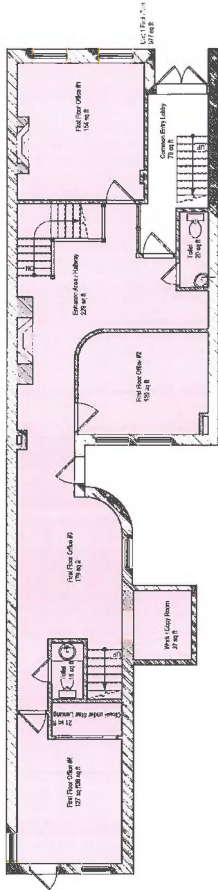
# AMENITIES

The building is ideally situated in close proximity to all subway lines via Government Center/Bowdoin and Park Street Stations. In addition, numerous garage parking options exist in the immediate vicinity.

The surrounding area offers tenants a variety of amenities including restaurants, coffee shops, hotels, and shopping along Cambridge Street, Quincy Market and a short walk to Downtown Crossing.

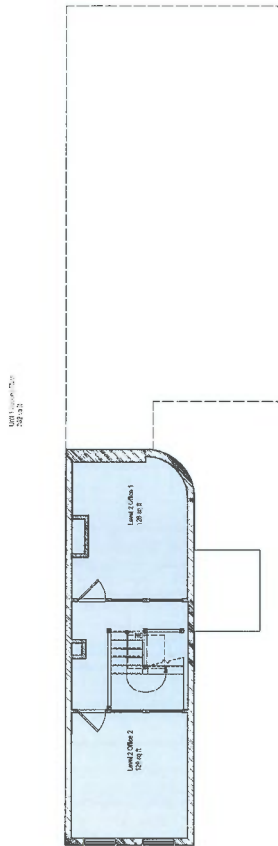
1<sup>st</sup> Floor – Street Level

← Bowdoin Street →



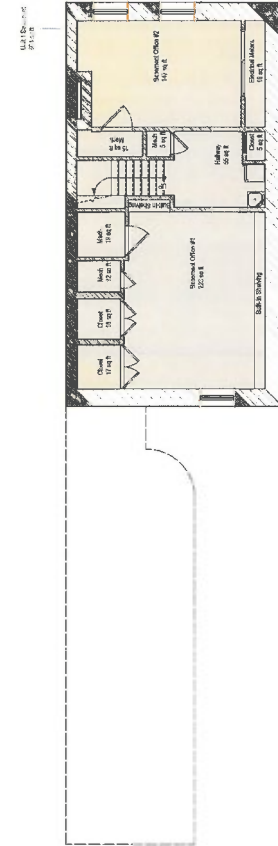
2<sup>nd</sup> Floor

← Bowdoin Street →



Lower Level

← Bowdoin Street →



**WILLIAM H. CATLIN, JR.**  
617.850.9606  
wcatlin@bradvisors.com

**JUSTIN D. HARLOW**  
617.850.9613  
jharlow@bradvisors.com



745 Boylston Street | Boston, MA 02116 | (T) 617.375.7900 | (F) 617.536.9566 | BRAdvisors.com

© Copyright Boston Realty Advisors. All rights reserved. The information contained here has been obtained through sources deemed reliable but cannot be guaranteed as to its accuracy. Any information of special interest should be obtained through independent verification.

05/25/16