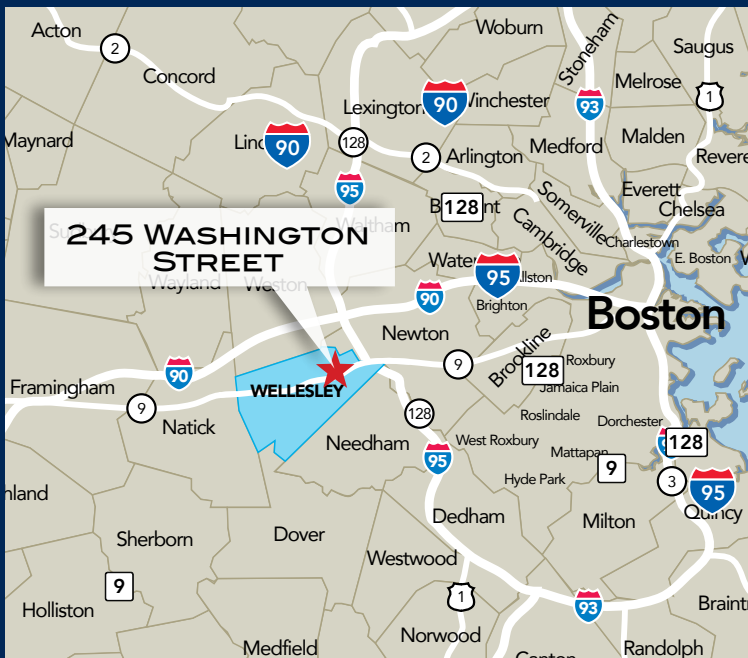


FOR LEASE

1,230 RSF of Office Space

245 WASHINGTON STREET · WELLESLEY, MA



Conveniently located at the corner of one of the busiest intersections of Wellesley, 245 Washington Street provides Tenants and customers with excellent visibility and on-site parking. Due to the highly desirable location, Tenants and customers can experience direct access to Route 9 and immediate access to Route 128/I-95 and the Massachusetts Turnpike.

Similar to other Intrum Corp. affiliate owned properties, this retail/office Building has benefited from an ongoing capital improvement program and professional and experienced local management and ownership. The building is in walking distance to amenities that include Whole Foods, Yama Japanese Restaurant, Quebrada Bakery and other local retailers/restaurants.

FEATURES

- Signage available
- Move-in ready
- On-site Japanese restaurant
- Abundance of natural light
- Walking distance to local retailers/restaurants
- Accessibility to Route 9, Route 128/I-95 and I-90 (Massachusetts Turnpike)

ADAM T. MEIXNER
Managing Director & Senior Partner
617.850.9660
ameixner@bradvisors.com

MATTHEW KEYS
Associate
617.850.9649
mkeys@bradvisors.com

JEREMY A. FREID
Managing Director & Senior Partner
617.850.9602
jfreid@bradvisors.com

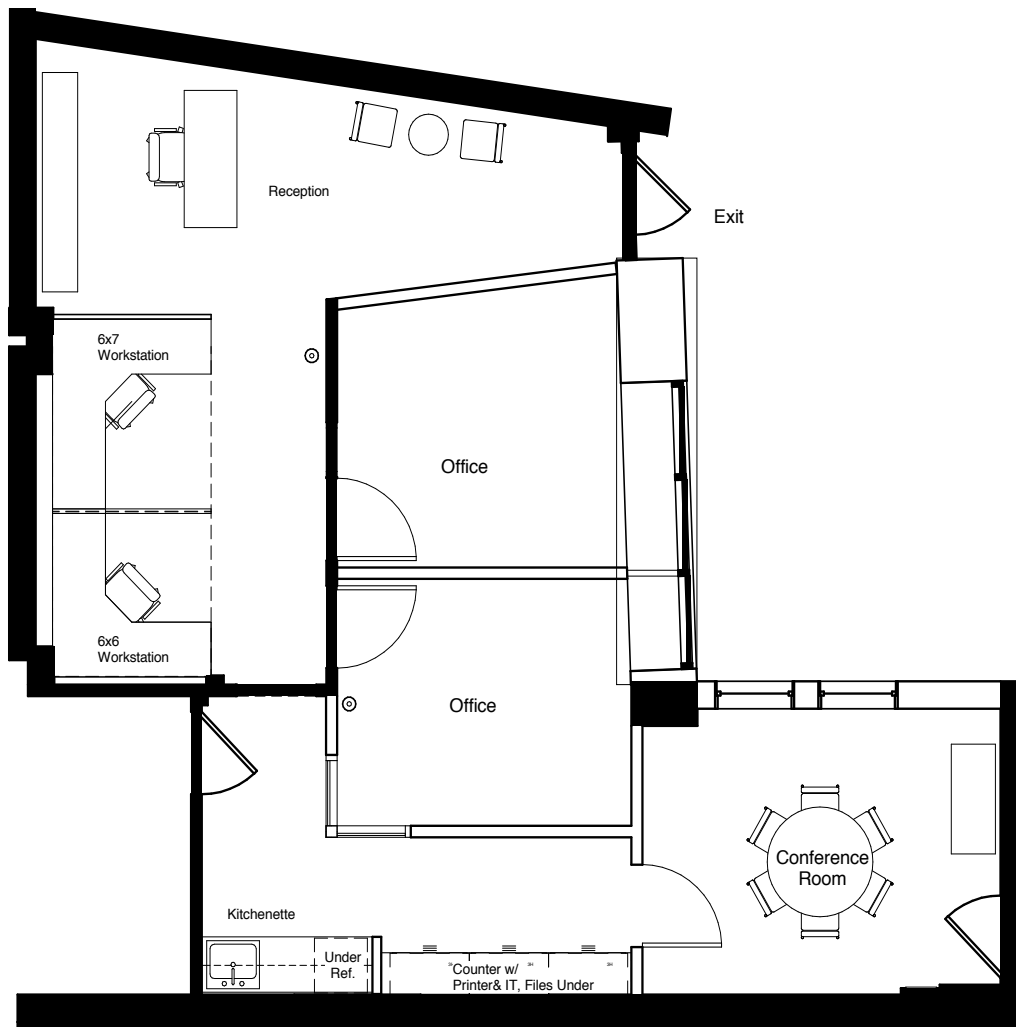
MEGHAN HUEBNER
Client Services Associate
617.850.9648
mhuebner@bradvisors.com

FOR LEASE

1,230 RSF of Office Space

245 WASHINGTON STREET · WELLESLEY, MA

1,230 RSF



ADAM T. MEIXNER
Managing Director & Senior Partner
617.850.9660
ameixner@bradvisors.com

MATTHEW KEYS
Associate
617.850.9649
mkeys@bradvisors.com

JEREMY A. FREID
Managing Director & Senior Partner
617.850.9602
jfreid@bradvisors.com

MEGHAN HUEBNER
Client Services Associate
617.850.9648
mhuebner@bradvisors.com



745 Boylston Street | Boston, MA 02116 | (T) 617.375.7900 | (F) 617.536.9566 | BRAdvisors.com

© Copyright Boston Realty Advisors. All rights reserved. The information contained here has been obtained through sources deemed reliable but cannot be guaranteed as to its accuracy. Any information of special interest should be obtained through independent verification.