



# CREATIVE LOFT OFFICE SPACE FOR LEASE

36 Bromfield Street · Boston, MA  
694 & 720 SF AVAILABLE

Boston Realty Advisors is pleased to present space for lease at 36 Bromfield Street. This stately five-story office building is strategically located in the heart of Boston's Downtown Crossing neighborhood. The building's location boasts immediate proximity to all major public transportation channels and public parking. It offers several creative spaces for different types of users. Spaces range in size from 694 SF to 720 SF. Floors have great window lines allowing for views and sunlight.

The property is owned and managed by The Druker Company, Ltd.

## AMENITIES

- Walking distance to MBTA Commuter Rail and Orange, Green, Red, Blue and Silver T Lines
- Several parking options nearby
- Close to several restaurants, hotels and shops including CVS, Macy's, Omni-Parker Hotel and Ruth's Chris Steakhouse
- Member of the Downtown Boston Business Improvement District

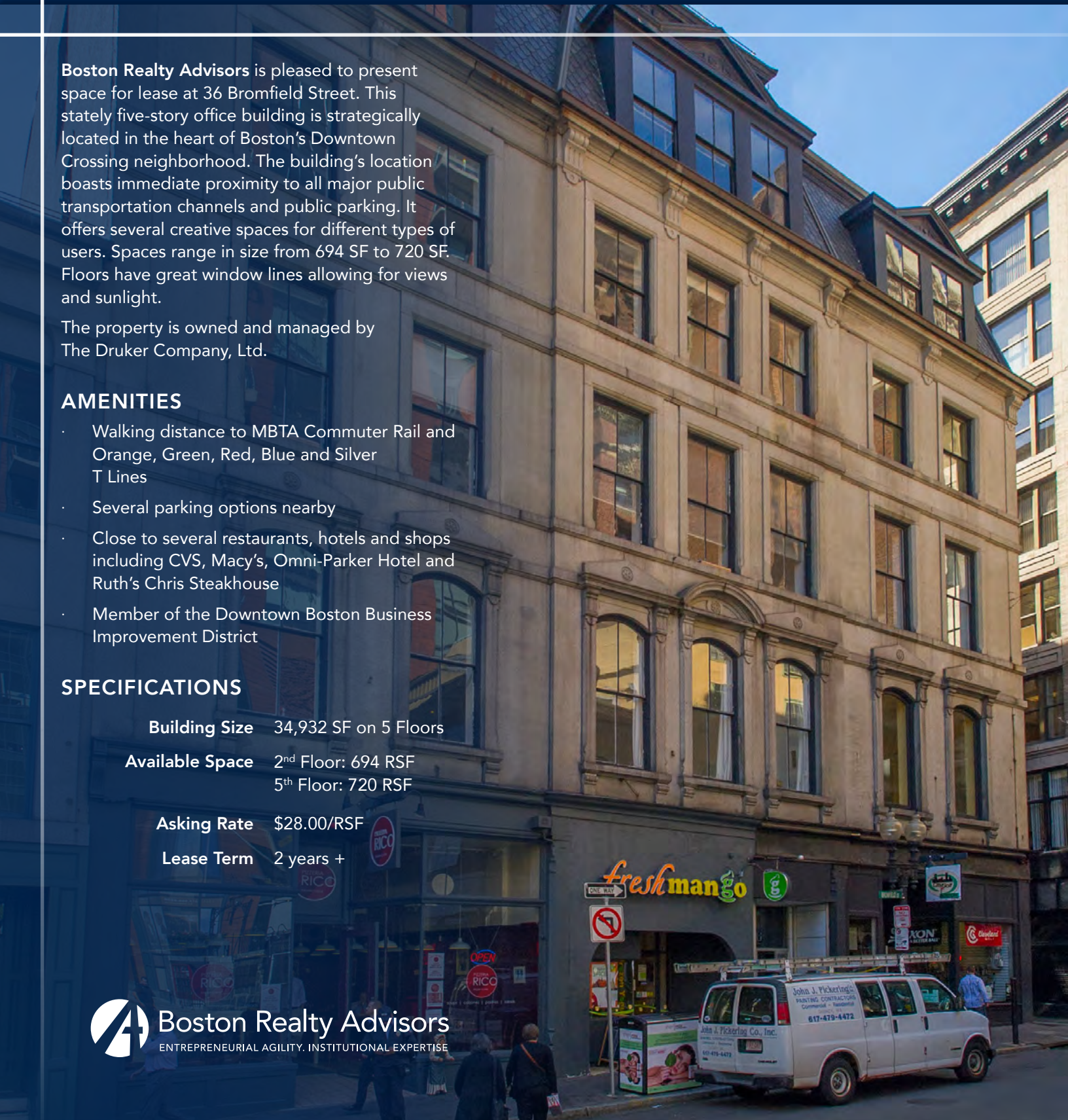
## SPECIFICATIONS

**Building Size** 34,932 SF on 5 Floors

**Available Space** 2<sup>nd</sup> Floor: 694 RSF  
5<sup>th</sup> Floor: 720 RSF

**Asking Rate** \$28.00/RSF

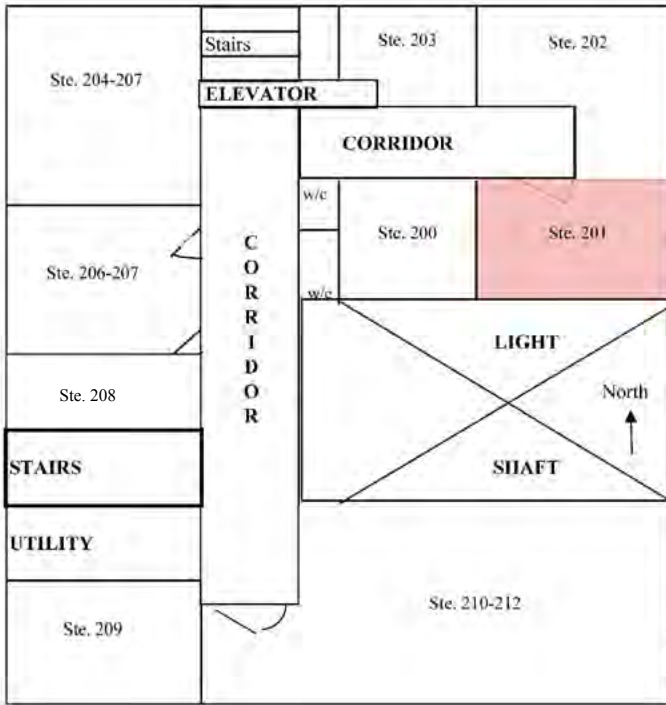
**Lease Term** 2 years +





## 2<sup>ND</sup> FLOOR PLAN

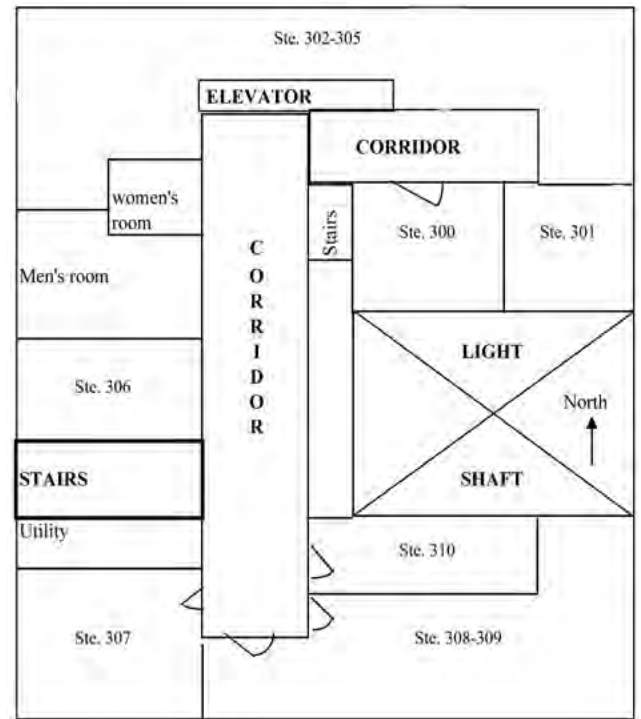
BROMFIELD STREET



\$28.00/RSF

## 3<sup>RD</sup> FLOOR PLAN

BROMFIELD STREET



FULLY LEASED



SUITE 201



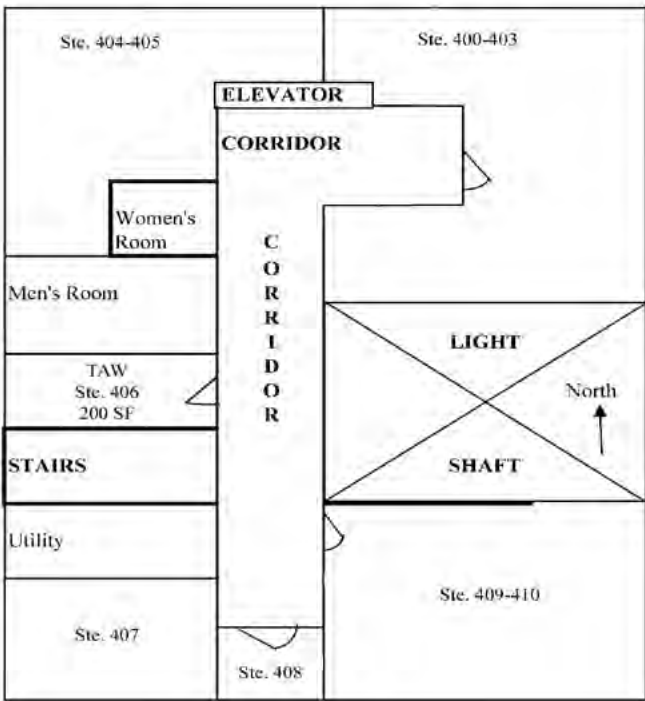
SUITE 302-305

# 36 BROMFIELD STREET

694 RSF on 2<sup>nd</sup> Floor & 720 RSF on 5<sup>th</sup> Floor

## 4<sup>TH</sup> FLOOR PLAN

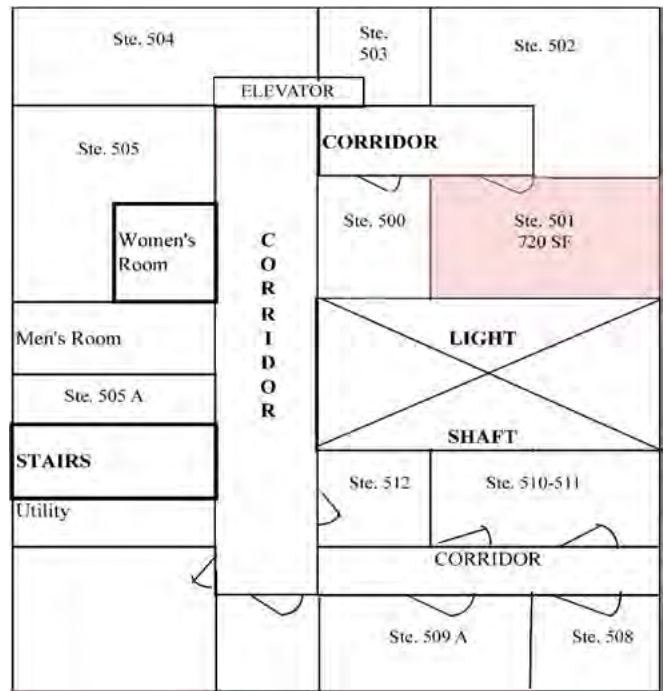
BROMFIELD STREET



FULLY LEASED

## 5<sup>TH</sup> FLOOR PLAN

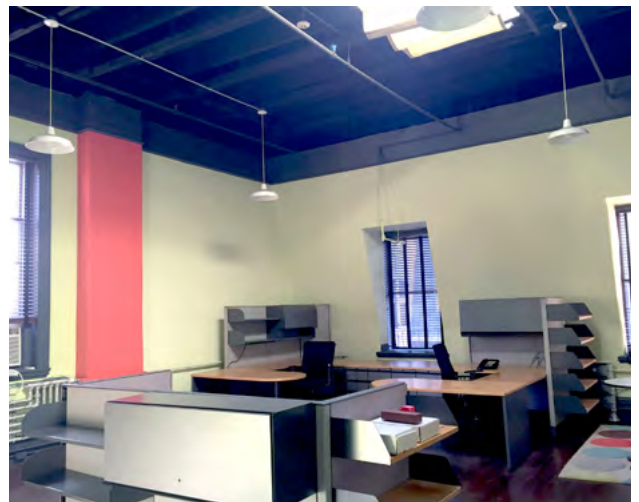
BROMFIELD STREET



\$28.00/RSF



SUITE 400-403



SUITE 501



